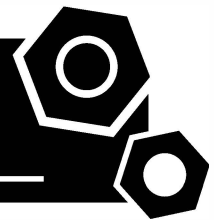


**Generator set  
Sound-proof type  
WCS350S**

**SPECIFICATIONS**



## 1 Standards & Conditions

### Design Standards

The designs and the productions are in conformity with:

- Conformance Européenne (CE)
- ISO8528-5:2005
- GB/T2820.5-2009

### Environmental Operating Conditions

- Installation place: Outdoors or indoors (well ventilated).
- Ambient temperature: -25°C to 50°C. The coolant heater is needed when the temperature is below 5°C
- Humidity: Less than 80%.
- Altitude: Below one thousand (1000) meters.

### Factory Inspection

- Inspection items.
- Protection devices working test.
- Starting ability in normal temperature.
- 50% rated power load moment capability.
- Voltage deviation and speed variation: 0%, 25%, 50%, 75%, 100%, 110% Load.

### Painting Process

- Painting process specifications and colors are based on the manufacturer's standard.
- The customer could also choose the color which the manufacturer offers.

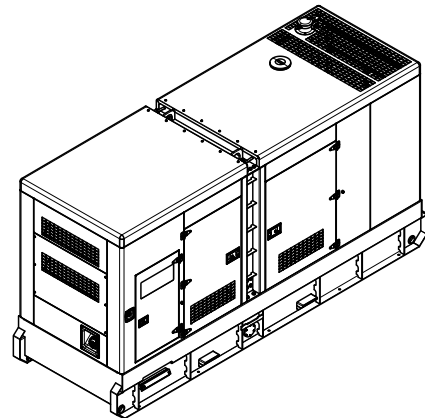
## 2 General Features

- Cummins engine 6LTAA9.5-G1
- Close coupled to Stamford alternator S4L1D-E4
- Microprocessor control module PLC-920
- ABB Main circuit breaker: 500A
- Rotate speed governor: Electronic
- Excitation System: Self excited, SHUNT
- Key switch
- Emergency stop switch
- ATS (automatic transfer switch) receptacle
- 2x12V/120AH sealed for life maintenance free battery

- Lockable battery isolator switch
- 50°C radiator
- Oil pump on the engine
- Steel base frame with lifting lug
- Vibration isolators between the engine/alternator and base frame
- Dry type air filter
- Base fuel tank for 10 hours running
- Drain points for fuel tank
- Operation Manual / Specifications

## 3 Equipment Specification

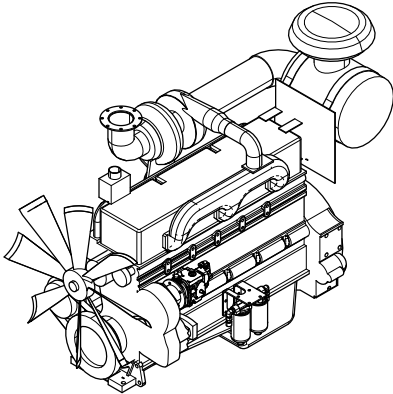
### General technical data



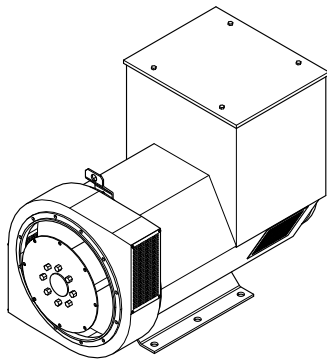
Model.....	WCS350S
Structure type .....	R
Tank capacity.....	700L
Dry weight.....	3860kg
Sound pressure level @7m .....	74.0dBA
Dimensions L×W×H.....	3900×1473×2186mm
Standby Power .....	350kVA/280kW
Prime Power .....	320kVA/256kW

Voltage	380V	400V	415V	440V	
Ampere	486.2A	461.9A	445.2A	419.0A	
Genset Fuel Consumption					
Frequency/Load	25%	50%	75%	100%	110%
50Hz (L/h)	18	35	52	70	78

## Power System

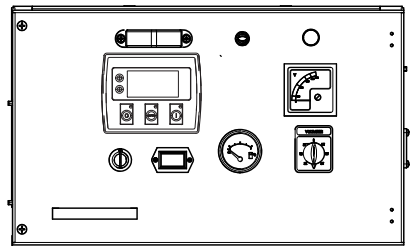


Engine Manufacturer/Brand .....	Cummins
Engine Model .....	6LTAA9.5-G1
Dry Weigh (approx.) .....	791Kg
Number of Cylinders .....	6
Bore .....	116.5mm
Stroke .....	148mm
Displacement .....	9.5L
Type of injection .....	Direct injection
Intake System .....	Turbocharged
Intake Resistance .....	≤6.22kPa
Cooling System .....	Water cooled
Fan .....	Pusher
Battery Voltage .....	24V
Type of Fuel .....	No.2-D per ASTM D975.
Type of Oil .....	API CD/SE or CCMCD4
Oil Capacity .....	32.4L
Type of Coolant .....	Glycol mixture
Coolant Capacity .....	11.1L
Back Pressure .....	≤10kPa
Standby Power .....	320kW
Prime Power .....	290kW



Alternator Manufacturer/Brand .....	Stamford
Alternator Model .....	S4L1D-E4
Exciter .....	Brushless
Cooling Fan .....	Cast alloy aluminum
Windings .....	100% copper
Insulation Class .....	H
Winding Pitch .....	2/3
Terminals .....	12
Drip Proof .....	IP23
Altitude .....	≤1000m
Overspeed .....	2250rpm
Air Flow .....	0.58m³/s(50Hz), 0.69m³/s(60Hz)
Voltage Regulation .....	±1.0%
Total Harmonic TGH / THCat no load < 1.5 % - on load < 5%	
Telephone Interference .....	THF<2%;TIF<50

## PLC-920 Control System

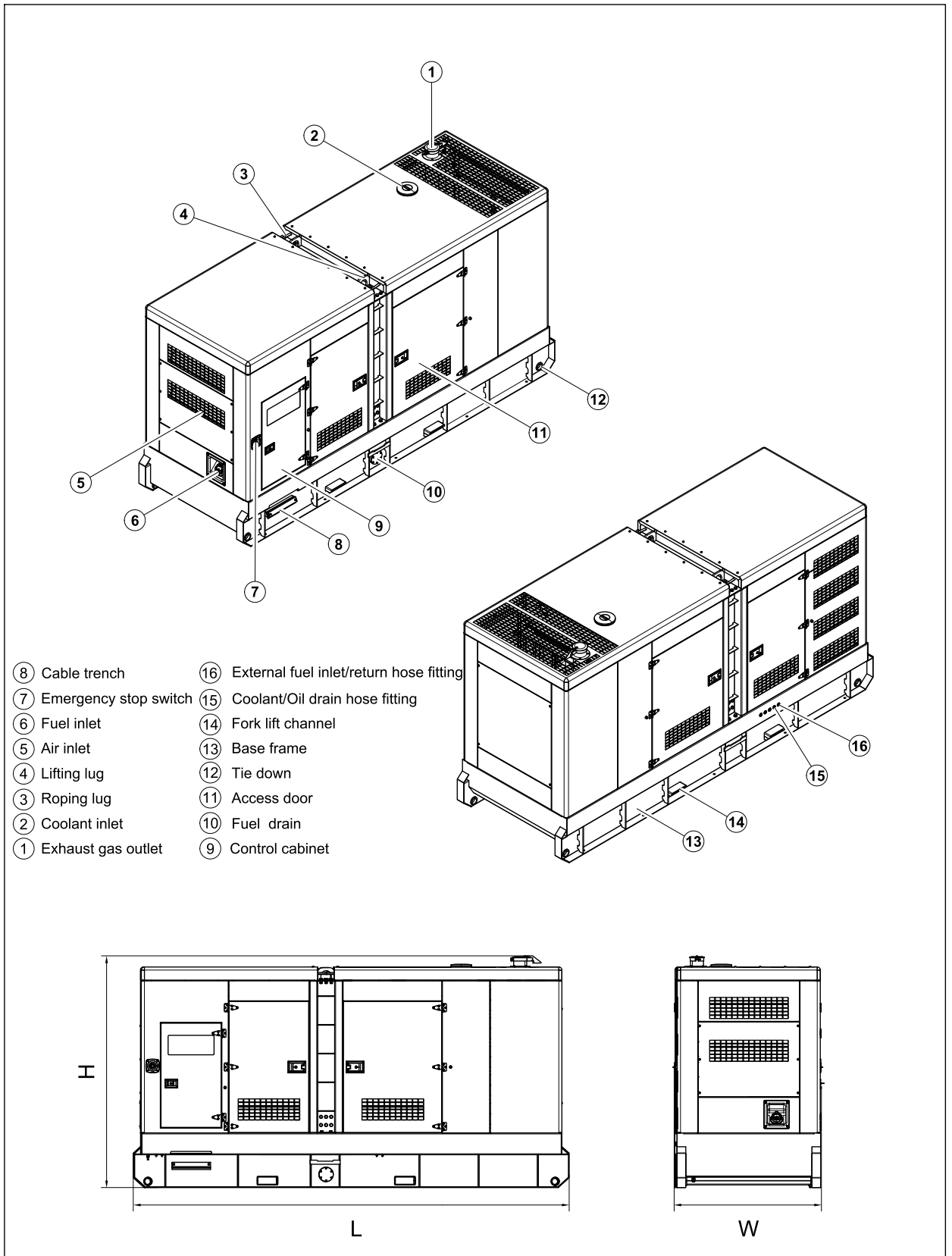


PLC-920 is an advanced control module based on micro-processor designed to control the engine via a key switch and push buttons on the front panel. The module is used to start and stop the engine and indicate fault conditions, automatically shutting down the engine and giving a true first up fault condition of an engine failure.

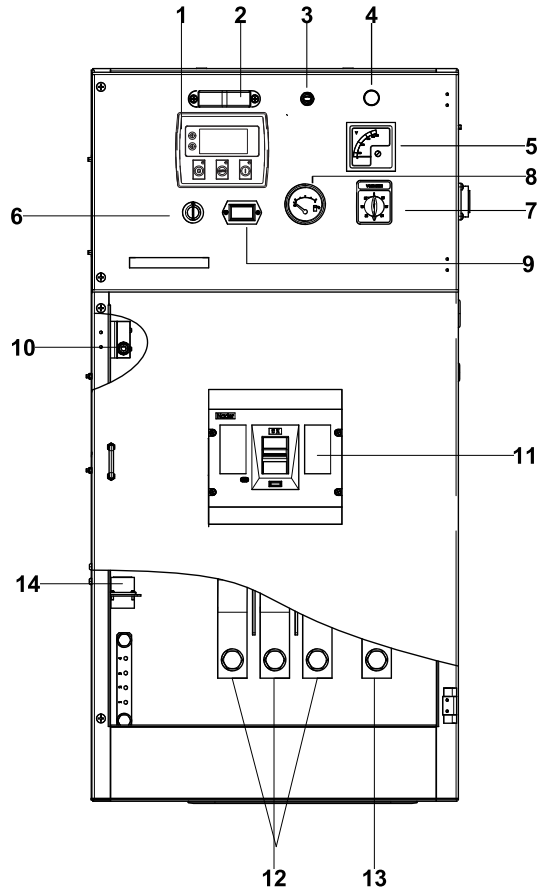
### Standard Control Function

- Manual Engine Control Module
- Low Oil Pressure
- High Engine Temperature
- Auxiliary Shutdown
- Overspeed Protection
- Protection hold-off timer
- Charge Failure warning

## 4 Overall Dimensions

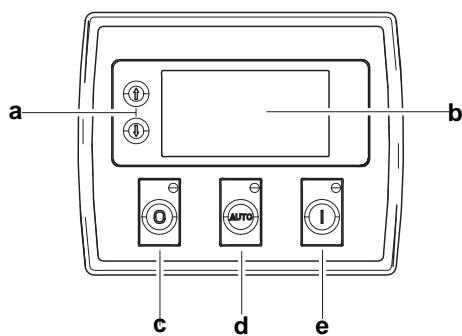


## 5 Control System



**Control & field wiring cabinet**

Ref.	Description
1	PLC-920 control module
2	Control cabinet lamp
3	Control cabinet lamp switch
4	Charge indicator
5	Voltage meter
6	Key switch
7	Voltage changer-over switch
8	Fuel level meter
9	Time counter
10	Limit switch
11	Main circuit breaker
12	Live wire terminal
13	Neutral wire terminal
14	Mains input/Remote control/ATS communication connector



**Control module**

Ref.	Description
a	Navigation button « Accept (Configuration mode only)
b	Main status display
c	Stop/reset button « Next page (Configuration mode only)
d	Auto start button « Decrease value/next item (Configuration mode only)
e	Start button « Increase value/next item (Configuration mode only)

1000031041-A2-E
-----------------

09.2023
---------

<http://www.powerlinkworld.com>

*Specification may change without prior notice. For more info.,  
contact Power Link or your local distributors please.*