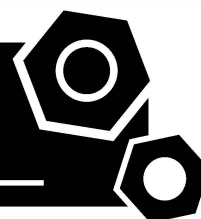


**Generator set**  
**Sound-proof type**  
**GMS380CS**

# **SPECIFICATIONS**



## 1 Standards & Conditions

### Design Standards

The designs and the productions are in conformity with:

- Conformance Européenne (CE)
- ISO8528-5:2005
- GB/T2820.5-2009

### Environmental Operating Conditions

- Installation place: Outdoors or indoors (well ventilated).
- Ambient temperature: -25°C to 50°C. The coolant heater is needed when the temperature is below 5°C
- Humidity: Less than 80%.
- Altitude: Below one thousand (1000) meters.

### Factory Inspection

- Inspection items.
- Protection devices working test.
- Starting ability in normal temperature.
- 50% rated power load moment capability.
- Voltage deviation and speed variation: 0%, 25%, 50%, 75%, 100%, 110% Load.

### Painting Process

- Painting process specifications and colors are based on the manufacturer's standard.
- The customer could also choose the color which the manufacturer offers.

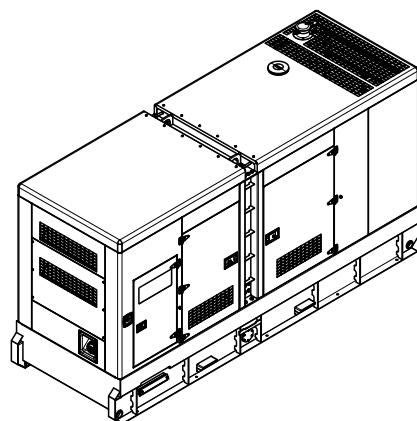
## 2 General Features

- Cummins engine 6ZTAA13-G3
- Close coupled to LSA alternator LSA47.3S4
- Microprocessor control module PLC-920
- Main circuit breaker: 630A
- Rotate speed governor: EFC
- Excitation System: Self excited
- Key switch
- Emergency stop switch
- ATS (automatic transfer switch) receptacle
- 2x12V/120AH sealed for life maintenance free battery

- Lockable battery isolator switch
- 50°C radiator
- Oil pump on the engine
- Steel base frame with lifting lug
- Vibration isolators between the engine/alternator and base frame
- Dry type air filter
- Base fuel tank for 10 hours running
- Drain points for fuel tank
- Operation Manual / Specifications

## 3 Equipment Specification

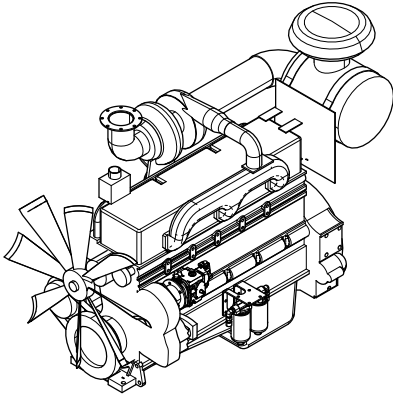
### General technical data



Model..... GMS380CS  
 Structure type .....R  
 Tank capacity..... 800L  
 Dry weight..... 4780kg  
 Sound pressure level @7m ..... 74.7dBA  
 Dimensions L×W×H..... 4345×1466×2316mm  
 Standby Power .....425kVA/340kW  
 Prime Power.....388kVA/310kW

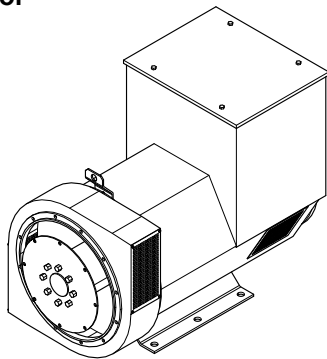
| Voltage                 | 380V   | 400V   | 415V   | 440V   |      |
|-------------------------|--------|--------|--------|--------|------|
| Ampere                  | 589.5A | 560.0A | 540.0A | 509.1A |      |
| Genset Fuel Consumption |        |        |        |        |      |
| Frequency/Load          | 25%    | 50%    | 75%    | 100%   | 110% |
| 50Hz (L/h)              | 20.9   | 38.0   | 56.5   | 76.5   | 86.9 |

## Power System



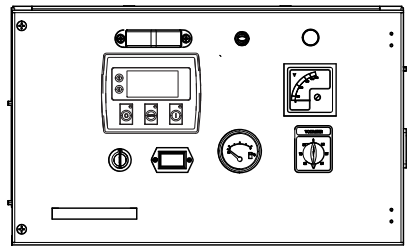
|                                 |                       |
|---------------------------------|-----------------------|
| Engine Manufacturer/Brand ..... | Cummins               |
| Engine Model .....              | 6ZTAA13-G3            |
| Dry Weigh (approx.) .....       | 1200Kg                |
| Number of Cylinders .....       | 6                     |
| Bore .....                      | 130mm                 |
| Stroke .....                    | 163mm                 |
| Displacement .....              | 13.0L                 |
| Type of injection .....         | Direct injection      |
| Intake System .....             | Turbocharged          |
| Intake Resistance .....         | ≤6.20kPa              |
| Cooling System .....            | Water cooled          |
| Fan .....                       | Pusher                |
| Battery Voltage .....           | 24V                   |
| Type of Fuel .....              | No.2-D per ASTM D975. |
| Type of Oil .....               | API CD/SE or CCMCD4   |
| Oil Capacity .....              | 45.4L                 |
| Type of Coolant .....           | Glycol mixture        |
| Coolant Capacity .....          | 23.1L                 |
| Back Pressure .....             | ≤13kPa                |
| Standby Power .....             | 380kW                 |
| Prime Power .....               | 340kW                 |

## Alternator



|   |                               |
|---|-------------------------------|
| Alternator Manufacturer/Brand .....                       | LSA                           |
| Alternator Model .....                                    | LSA47.3S4                     |
| Exciter .....   | Brushless                     |
| Cooling Fan .....   | Cast alloy aluminum           |
| Windings .....  | 100% copper                   |
| Insulation Class .....                                    | H                             |
| Winding Pitch .....                                       | 2/3                           |
| Terminals .....   | 12                            |
| Drip Proof .....  | IP23                          |
| Altitude .....  | ≤1000m                        |
| Overspeed .....   | 2250rpm                       |
| Air Flow .....  | 0.58m³/s(50Hz),0.69m³/s(60Hz) |
| Voltage Regulation .....                                  | ±1.0%                         |
| Total Harmonic TGH / THCat no load < 1.5 % - on load < 5% |                               |
| Telephone Interference .....                              | THF<2%;TIF<50                 |

## PLC-920 Control System

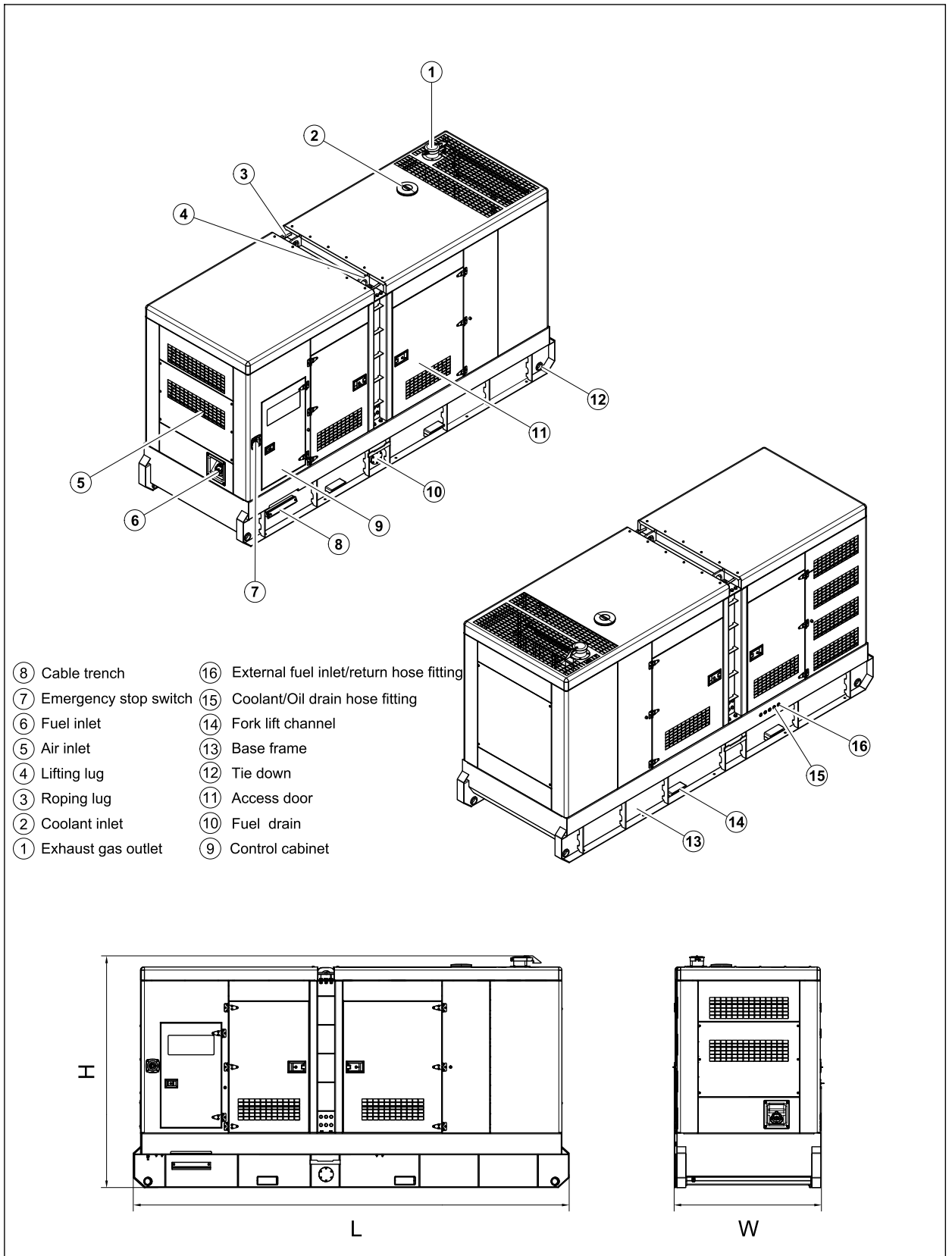


PLC-920 is an advanced control module based on micro-processor designed to control the engine via a key switch and push buttons on the front panel. The module is used to start and stop the engine and indicate fault conditions, automatically shutting down the engine and giving a true first up fault condition of an engine failure.

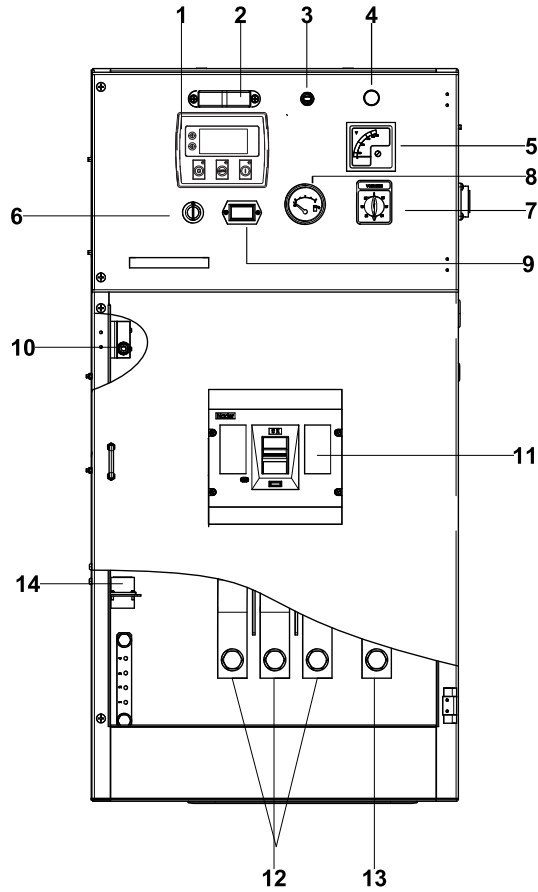
### Standard Control Function

- Manual Engine Control Module
- Low Oil Pressure
- High Engine Temperature
- Auxiliary Shutdown
- Overspeed Protection
- Protection hold-off timer
- Charge Failure warning

## 4 Overall Dimensions

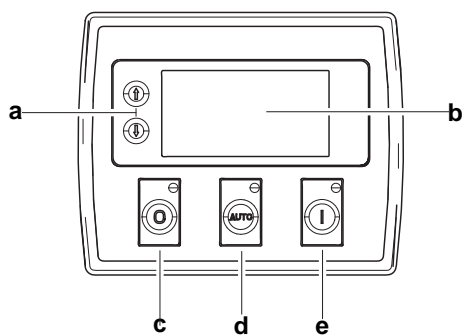


## 5 Control System



**Control & field wiring cabinet**

| Ref. | Description  |
|------|--|
| 1    | PLC-920 control module                                     |
| 2    | Control cabinet lamp                                       |
| 3    | Control cabinet lamp switch                                |
| 4    | Charge indicator   |
| 5    | Voltage meter  |
| 6    | Key switch   |
| 7    | Voltage changer-over switch                                |
| 8    | Fuel level meter   |
| 9    | Time counter   |
| 10   | Limit switch   |
| 11   | Main circuit breaker                                       |
| 12   | Live wire terminal   |
| 13   | Neutral wire terminal                                      |
| 14   | Mains input/Remote control/<br>ATS communication connector |



**Control module**

| Ref. | Description   |
|------|---|
| a    | Navigation button «<br>Accept (Configuration mode only)                   |
| b    | Main status display   |
| c    | Stop/reset button «<br>Next page (Configuration mode only)                |
| d    | Auto start button «<br>Decrease value/next item (Configuration mode only) |
| e    | Start button «<br>Increase value/next item (Configuration mode only)      |

|                 |
|-----------------|
| 1000032575-A2-E |
|-----------------|

|         |
|---------|
| 10.2023 |
|---------|

<http://www.powerlinkworld.com>

*Specification may change without prior notice. For more info.,  
contact Power Link or your local distributors please.*