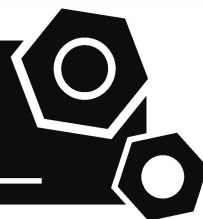
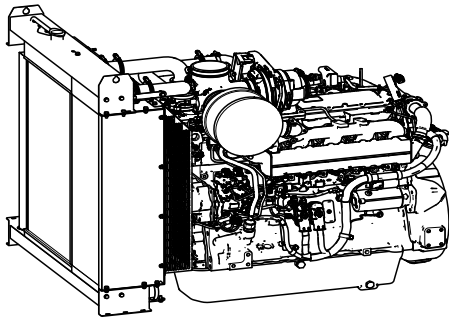


**Generator set
Sound-proof type
E1000JS-T**

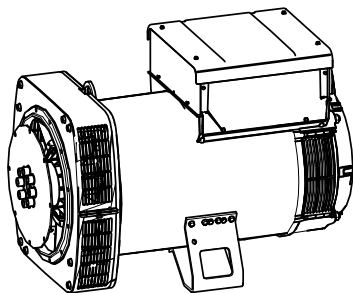
SPECIFICATIONS



Dck Yf' GrghYa



Engine Manufacturer/Brand.....	Johndeere
Engine Model.....	6136CG550
Dimensions L×W×H.....	1498×890×1367mm
Dry Weigh (approx.)	1521Kg
Number of Cylinders.....	6
Bore.....	132mm
Stroke	165mm
Displacement.....	13.55L
Compression Ratio	15.9
Type of injection.....	High pressure common rail
Intake System.....	Turbocharged
Intake Resistance	≤6.25kPa
Cooling System	Water cooled
Fan	Pusher
Battery Voltage	24V
Type of Fuel.....	Ultra Low Sulfur Fuel Only
Type of Oil	Class CJ-4/CK-4 oil as per API classification
Oil Capacity	40.0L
Type of Coolant	Glycol mixture
Engine Coolant Capacity	27.3L
Back Pressure	≤ 7.5kPa
Standby Power.....	505kW
Prime Power.....	462kW
Fuel Consumption(100%load).....	100L/h



Alternator Manufacturer/Brand	Leroy Somer
Alternator Model	LSA47.3M8
Exciter.....	Brushless
Cooling Fan	Cast alloy aluminum
Windings.....	100% copper
Insulation Class	H
Winding Pitch.....	2/3
Terminals	12
Drip Proof	IP23
Altitude.....	≤1000m
Overspeed	2250 rpm
Air Flow.....	0.9m³/s(50HZ), 1.1m³/s(60HZ)
Voltage Regulation	±0.5%
Total harmonic TGH / THCat no load < 1.5 % - on load<2. %	
Telephone Interference.....	THF<2%;TIF<50

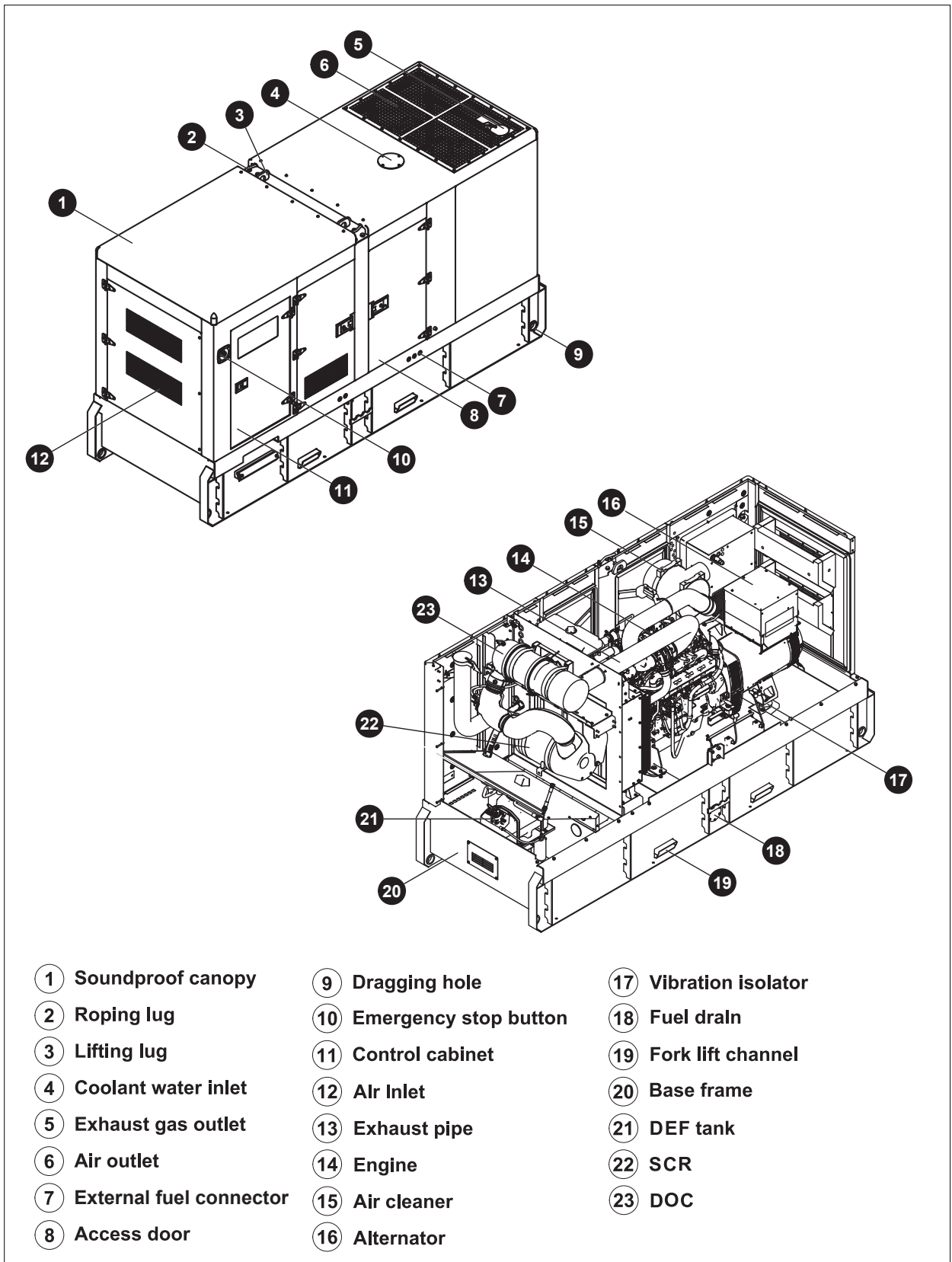
PLC-500 Control System



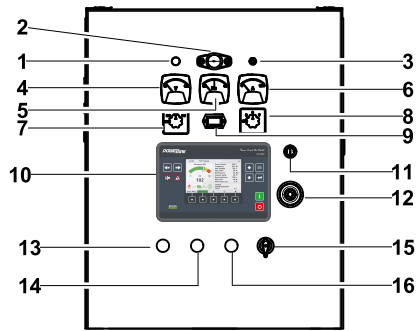
PLC-500 is a microprocessor based control unit containing all necessary functions for protection of the genset and the breaker control. Furthermore, it contains all necessary three-phase measuring circuits and presents all values and alarms on the LCD display. The module has the function of load sharing which enables the module to share the active load (kW) equally when operating in parallel with other gensets. The load sharing is performed so each genset takes a portion of the load that is calculated in percent according to the nominal power.

- Microprocessor control, with high stability and credibility
- Monitoring and measuring operational parameters of the genset
- Indicating operation status, fault conditions, all parameters and alarms
- Multiple protections; multiple parameters display, like pressure, temp. etc.
- Manual, automatic and remote work mode selectable
- RS232 & RS485 can be used at the same time
- Real time clock for time and date display, overall runtime display, 250 log entries

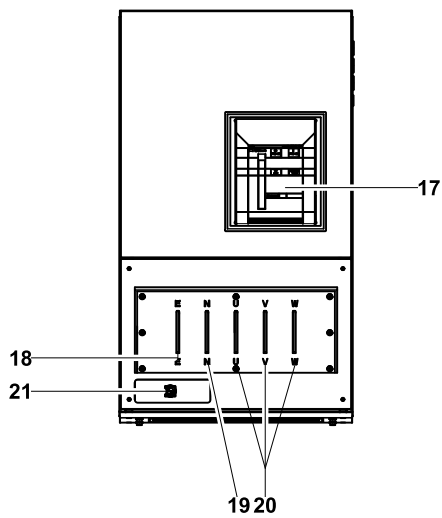
4 Overall Dimensions



5 Control System



Control cabinet



Field wiring cabinet

Ref.	Description
1	Charge indicator
2	Control cabinet lamp
3	Control cabinet lamp switch
4	Voltage meter
5	Frequency meter
6	Current meter
7	Changerover switch-Voltage
8	Changerover switch-Current
9	Time counter
10	Control module
11	Key switch
12	Emergency stop switch
13	GCB closed indicator
14	GCB opened indicator
15	Control power switch
16	Alarm reset button
17	Main circuit breaker
18	Ground wire terminal
19	Neutral wire terminal
20	Live wire terminals
21	Paralleling connector with the mains

1000035851-A1-E

09.2023

<http://www.powerlinkworld.com>

*Specification may change without prior notice. For more info.,
contact Power Link or your local distributors please.*