

New VR Series

Diesel Generators

Stage II Engine powered by PowerLink

50HZ | 60HZ 10kVA-1000kVA



POWERlink
Power Systems
Power Link the World

NEW VR DIESEL GENERATORS

Overview of NEW VR Product Series	2
Features of NEW VR Product Series	3
Standard Configuration	4
Optional Configuration	6
NEW VR Selection Table	8
Sales, Service and Technical Support	12

OVERVIEW OF NEW VR PRODUCT SERIES

Our new VR Series diesel generator sets, with a power range of 10KVA - 1000KVA, adopts Stage II emission standard Engine powered by PowerLink. Our products are reliable and durable, and can be used as prime continuous power supply and also provide stable standby power. PowerLink provides suitable products for investors to meet different application needs according to different installation location and application requirements of each project.

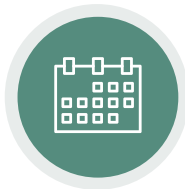


FEATURES OF NEW VR PRODUCT SERIES

NEW VR series diesel generator sets



DURABLE



RELIABLE



COST-EFFECTIVE

Main Application Areas



RENT POWER



MINING



FACTORY POWER



PORT POWER



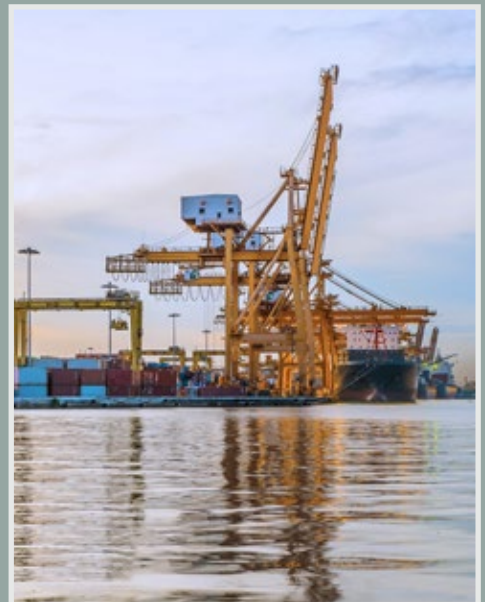
POWER PLANT



STANDBY POWER



OUTDOOR
CONSTRUCTION



STANDARD CONFIGURATION

Description of standard configuration of NEW VR series



Battery

The starting battery, with a high starting current for the generator, has a cycle life of 500 - 600 times.



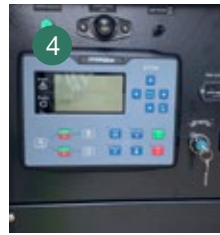
Silencer

Applying Porous sound absorbing material with a special design, noise reduction is from 25dBA - 30dBA.



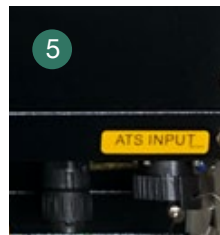
Smart Controller

Integrates the functions of power generation output and municipal power input for preheating.



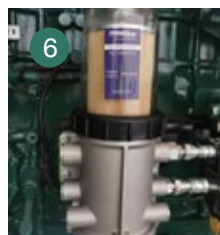
XC762 controller (P≥625kVA)

It includes various protection functions and circuit breaker control functions, which can monitor the mains in real time and start the genset automatically when the mains is abnormal.



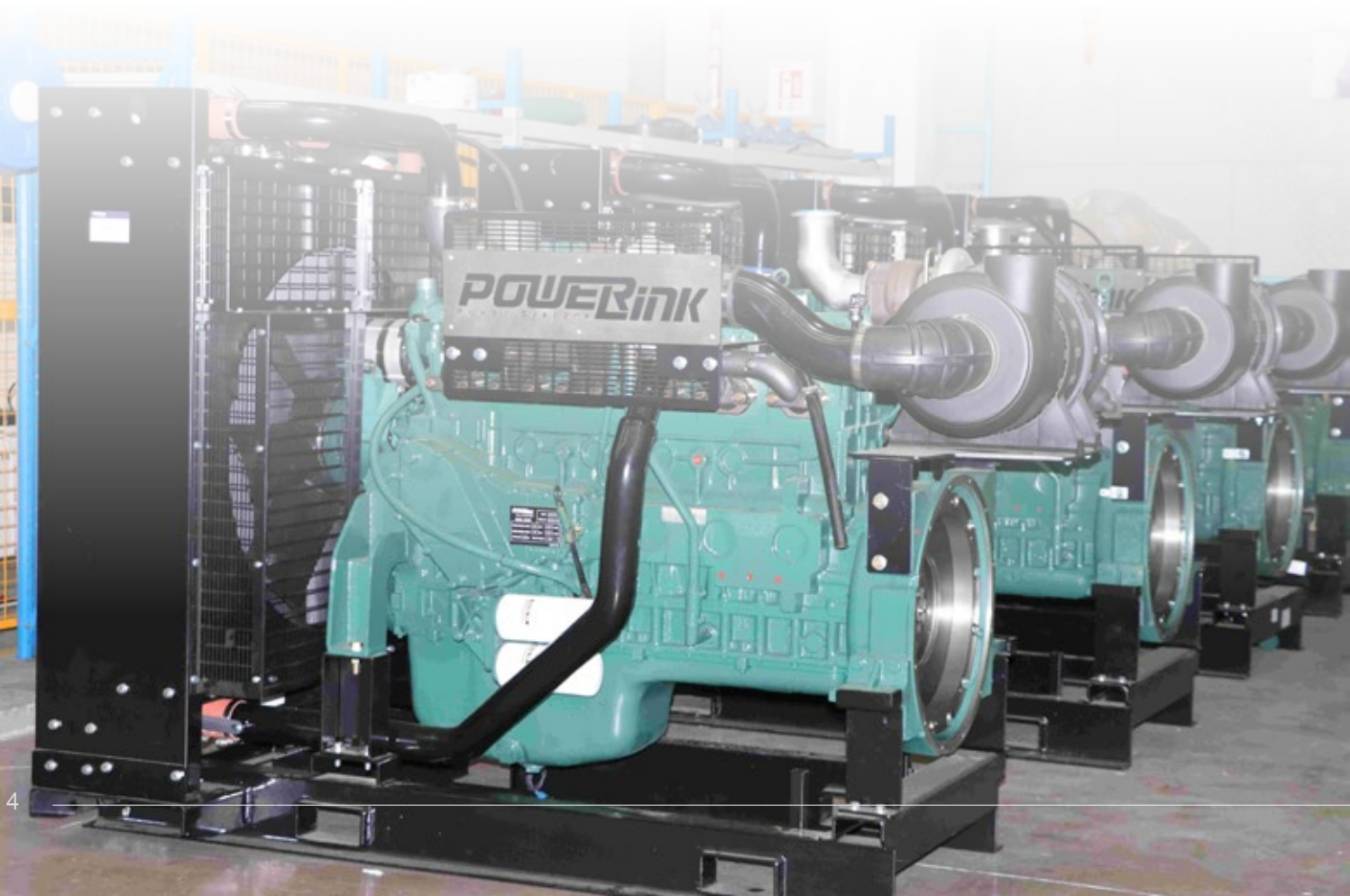
ATS connector

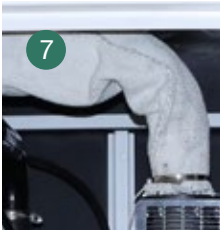
It connects to the mains. The genset would start automatically and supply power to the loads when the mains is abnormal.



Fuel-water separator

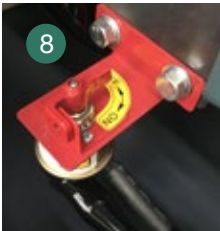
Fully filter water and impurities in fuel to improve fuel quality.





High temperature protective sleeve

Isolate high temperature parts to prevent accidental scalding



Battery negative switch

It can break the battery quickly and reliably and ensure the gensets safety.



Mains float charger

Multi-Stage intelligent charging, low output ripple.



Sealing and waterproof door

High performance rubber sealing rings are installed around all doors to prevent water penetration. And the canopy and doors are made of Galvanised sheets, which is corrosion-resistant and has no welding seam to ensure no water seepage.



Rainproof and dustproof air inlet

The air intake is sufficient and can prevent the infiltration of rain, dust or sand



Stainless steel box lock

Providing reliable performance, corrosion resistance and a long service life.



OPTIONAL CONFIGURATION

Description of optional configuration of NEW VR series



PLC7420 controller

It includes various protection functions and circuit breaker control functions, which can monitor the mains in real time and start the genset automatically when the mains is abnormal.



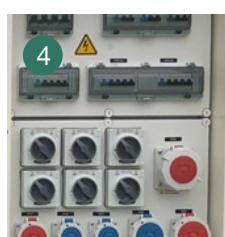
Remote controller

PLC890 controller has three remote control functions of telemetry, remote signaling and remote control, which can be used for remote maintenance and fault diagnosis.



Parallel / grid connected controller

PLC500 controller is used for paralleling multiple gensets, and the control system automatically distributes the output according to the total load power. It can also control a single genset connected to the grid.



Convenient output socket

Provide convenient and rapid power output. Each output has an independent circuit breaker and leakage protector. European standard or Australia standard socket can be selected.



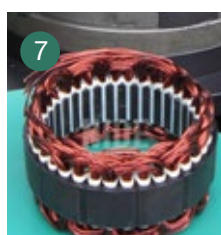
4P main circuit breaker

High quality ABB main circuit breaker, breaking quickly, safe and reliable.



Permanent magnet generator (PMG)

PMG can provide stable and reliable power supply for AVR with timely response. It can provide 300% rated current in case of short circuit and maintain for 5-10 seconds.



Three times insulation dip painting of generator winding

It is suitable for high humidity and salt spray corrosion environments with high insulation and reliability.



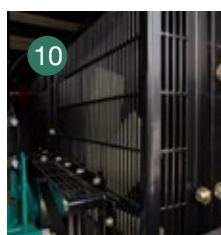
Jacket water preheater

The engine can start up quickly under low temperature environment to ensure normal operation of the genset.



Heavy duty air filter

Double filter elements are adopted to enhance air purification ability and remove dust, particles and other solid impurities.



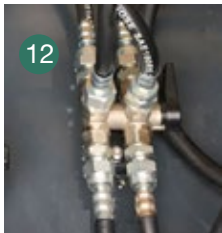
Anti salt spray radiator

The radiator core is made of special material and technology, which has strong corrosion resistance and ensures no leakage of coolant. It is suitable for salt spray corrosive atmosphere such as port or seaside.



Automatic oil filling system

Equipped with daily oil tank and oil level switch, it can automatically fill the oil for the engine, ensure long-term continuous operation, and does not need to stop the engine to replenish oil.



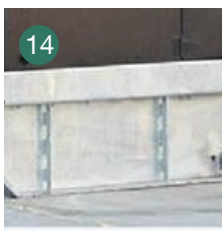
Fuel three way valve

Transfer the engine fuel supply system freely between the internal tank and external tank.



Large fuel tank

Our double-layer fuel tank, with a leak proof design, is fully enclosed within the base frame. The tank capacity can meet the requirement of 24hrs continuous running.



Galvanized base frame

High strength base frame with hot galvanizing process is adopted to enhance corrosion resistance and is suitable for salt spray corrosive atmosphere.



Trailer

The modular combination structure is adopted, which is convenient to install and move, and can be put into use quickly.



NEW VR SELECTION TABLE

High Cost Effective Genset

10kVA - 1000kVA
50Hz | 60Hz Available



Available Models:

Powered by PowerLink / Voltage 380-415V / 50Hz / 3P

Product Model	Prime Power		Standby Power		Engine Model	Fuel Cons.	Noise Level
	kVA	kW	kVA	kW	Powerlink	@ 75% Load	dB(A) @7m
VR10XS	10	8	11	8.4	VR3-1.4G1	2.0	66.8
VR15XS	15	12	16	13	VR4-2.3G1	2.5	66.8
VR20XS	20	16	22	18	VR4-2.7G1	4.2	67.1
VR30XS	30	24	33	26	VR4-3.2G1	5.6	67.4
VR45XS	45	36	50	40	VR4-3.2TG2	5.6	67.4
VR60XS	60	48	66	53	VR4-4.1TG2	10.0	68.0
VR70XS	70	54	77	59	VR4-4.1TAG2	14.0	68.0
VR80XS	80	64	88	70	VR4-4.1TAG3	14.0	68.5
VR110XS	110	88	121	97	VR4-4.8TAG2	15.0	69.2
VR125XS	125	100	138	110	VR4-4.8TAG3	16.0	70.0
VR165XS	165	132	182	145	VR6-6.5TAG2	25.0	71.0
VR200XS	200	160	220	176	VR6-9.7TAG1	34.5	71.3
VR250XS	250	200	275	220	VR6-10TAG1	43.0	72.0
VR315XS	315	250	346	275	VR6-10TAG2	58.0	73.0
VR375XS	375	300	412	330	VR6-12TAG2	66.0	73.0
VR450XS	450	360	495	396	VR6-13TAG3	73.0	74.0
VR500XS	500	400	555	440	VR6-16TAG3	81.0	74.0
VR625XS	625	500	688	550	VR6-25TAG4	97.0	75.0
VR800XS	800	660	880	726	VR6-25TAG5	137.0	76.0
VR900XS	900	720	1000	800	VR6-35TAG4	160.0	77.0
VR1000XS	1000	800	1100	880	VR6-35TAG5	160.0	77.0

NEW VR SELECTION TABLE

High Cost Effective Genset

10kVA - 1000kVA
50Hz | 60Hz Available

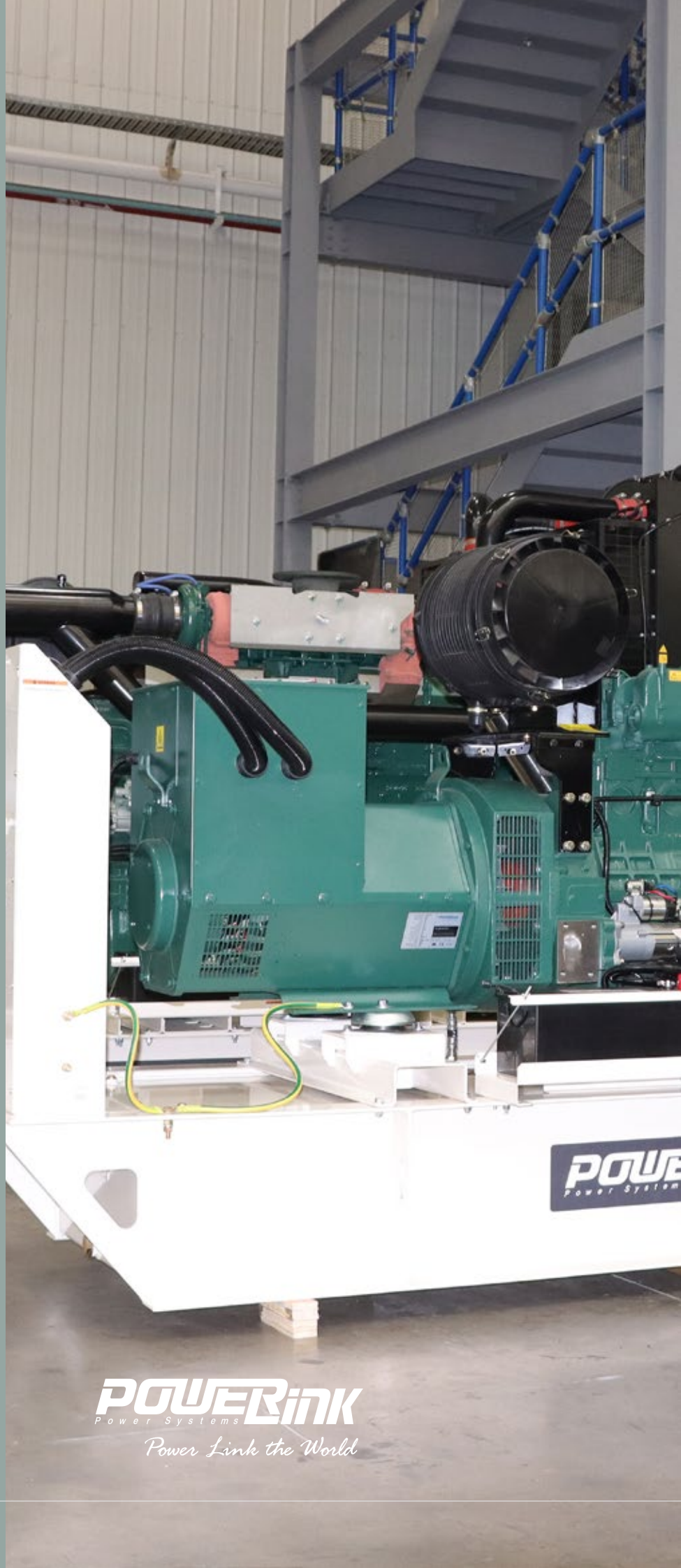
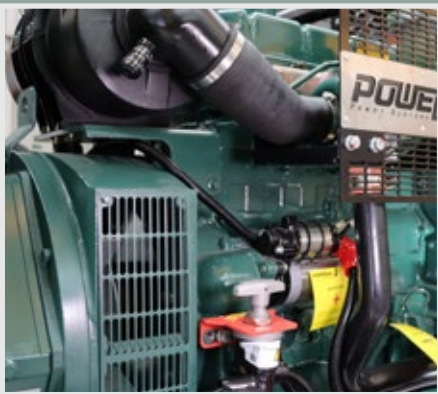
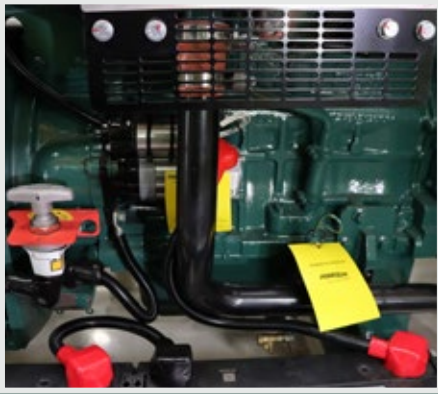


Available Models:

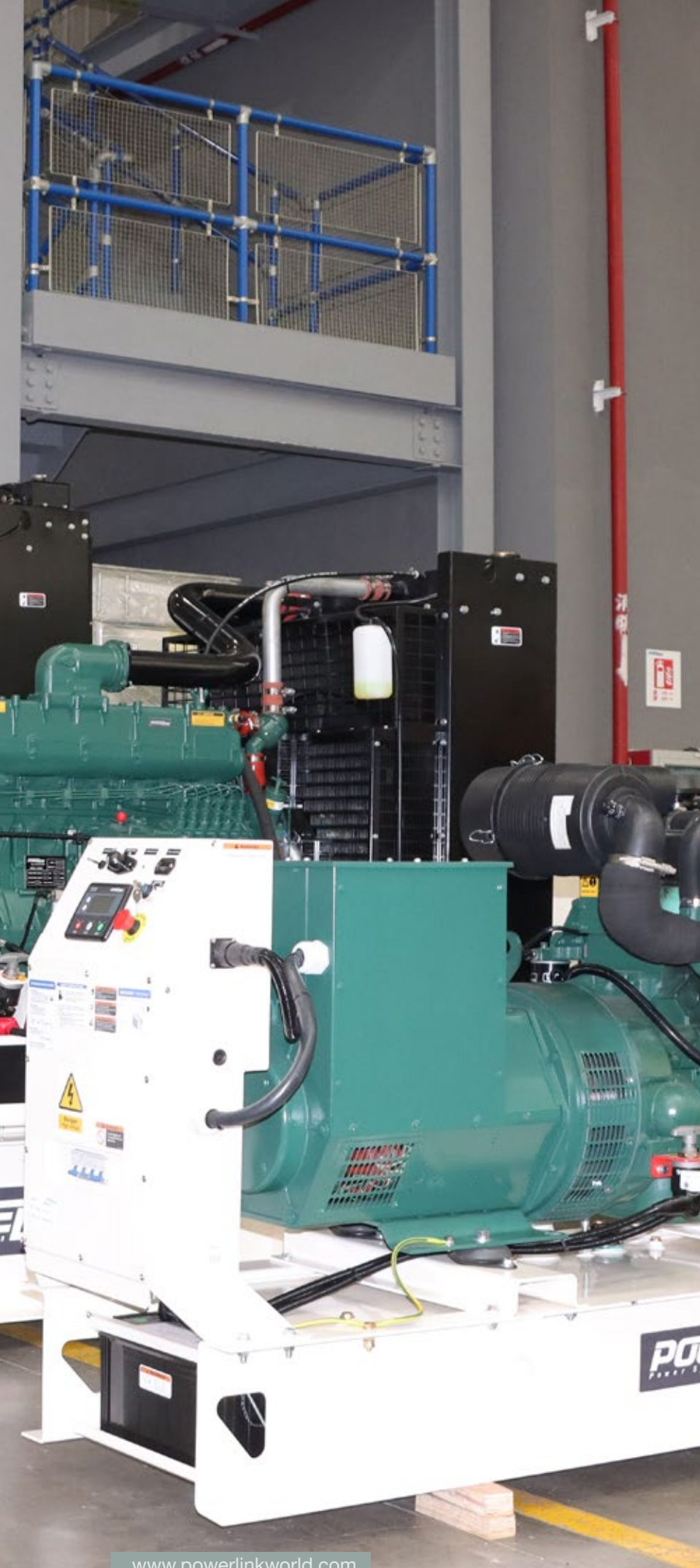
Powered by PowerLink / 60Hz / 1800RPM / 3P

Product Model	Prime Power		Standby Power		Engine Model	Fuel Cons.	Noise Level
	kVA	kW	kVA	kW	Powerlink	@ 75% Load	dB(A) @7m
VR11X6S	12	10	13	11	VR3-1.4G1	2.0	66.8
VR17X6S	19	15	21	17	VR4-2.3G1	2.5	66.8
VR22X6S	25	20	28	22	VR4-2.7G1	4.2	67.1
VR30X6S	35	28	39	31	VR4-3.2G1	5.6	67.4
VR40X6S	50	40	55	44	VR4-3.2TG2	5.6	67.4
VR60X6S	68	55	75	60	VR4-4.1TG2	10.0	68.0
VR70X6S	75	60	83	66	VR4-4.1TAG2	14.0	68.0
VR90X6S	100	80	110	88	VR4-4.1TAG3	14.0	68.5
VR110X6S	120	96	132	106	VR4-4.8TAG2	15.0	69.2
VR120X6S	135	108	149	119	VR4-4.8TAG3	16.0	70.0
VR158X6S	180	144	198	158	VR6-6.5TAG2	25.0	71.0
VR200X6S	225	180	248	198	VR6-9.7TAG1	34.5	71.3
VR245X6S	275	220	303	242	VR6-10TAG1	43.0	72.0
VR300X6S	350	280	385	308	VR6-10TAG2	58.0	73.0
VR360X6S	413	330	454	363	VR6-12TAG2	66.0	73.0
VR400X6S	450	360	495	396	VR6-13TAG3	73.0	74.0
VR500X6S	563	450	619	495	VR6-16TAG3	81.0	74.0
VR600X6S	688	550	756	605	VR6-25TAG4	97.0	75.0
VR770X6S	875	700	963	770	VR6-25TAG5	137.0	76.0
VR800X6S	900	720	990	792	VR6-35TAG4	160.0	77.0
VR960X6S	1100	880	1210	968	VR6-35TAG5	160.0	77.0





POWERink
Power Systems
Power Link the World



SALES AND SERVICE SUPPORT

With 132 sales service providers in 98 countries and subsidiaries in the United Kingdom, China, Australia and Myanmar, the company provides customers with sufficient, fast and high-quality product supply and service.

THINK GLOBALLY, ACT LOCALLY ALWAYS AT YOUR SIDE

Every product in every region has a professional team to serve our distributors. With the help of the global distributor network, PowerLink can provide energy services for users all over the world.



TECHNICAL SUPPORT AND HIGH-QUALITY CONTINUOUS AFTER SALES SERVICE



We are confident enough to get the job done and capable enough to move quickly.

At PowerLink, the success of the customer is of high importance. We deliver service solutions and utilize our full expertise to help you reach your goals.

PowerLink, ensures optimum performance and longevity for every generating set through its after-sales service department.

POWERink
Power Systems
Power Link the World



WE OFFER AFTER-SALES ASSISTANCE AND A COMPLETE RANGE OF GENUINE SPARE-PARTS THROUGHOUT THE WORLD



A first-class support system is provided by its experienced and highly-qualified technical team, along with a wide array of spare parts, always available in stock.

OUR SERVICE - AS A PART OF YOUR BUSINESS



POWERink
Power Systems
Power Link the World

If there is data change without notice
and need more information, please
contact us or your local agents.

March, 2022 No.PLMB202203011DEV1.0