









# PHE200

PORTABLE HYBRID ENERGY SYSTEM

## SPECIFICATION

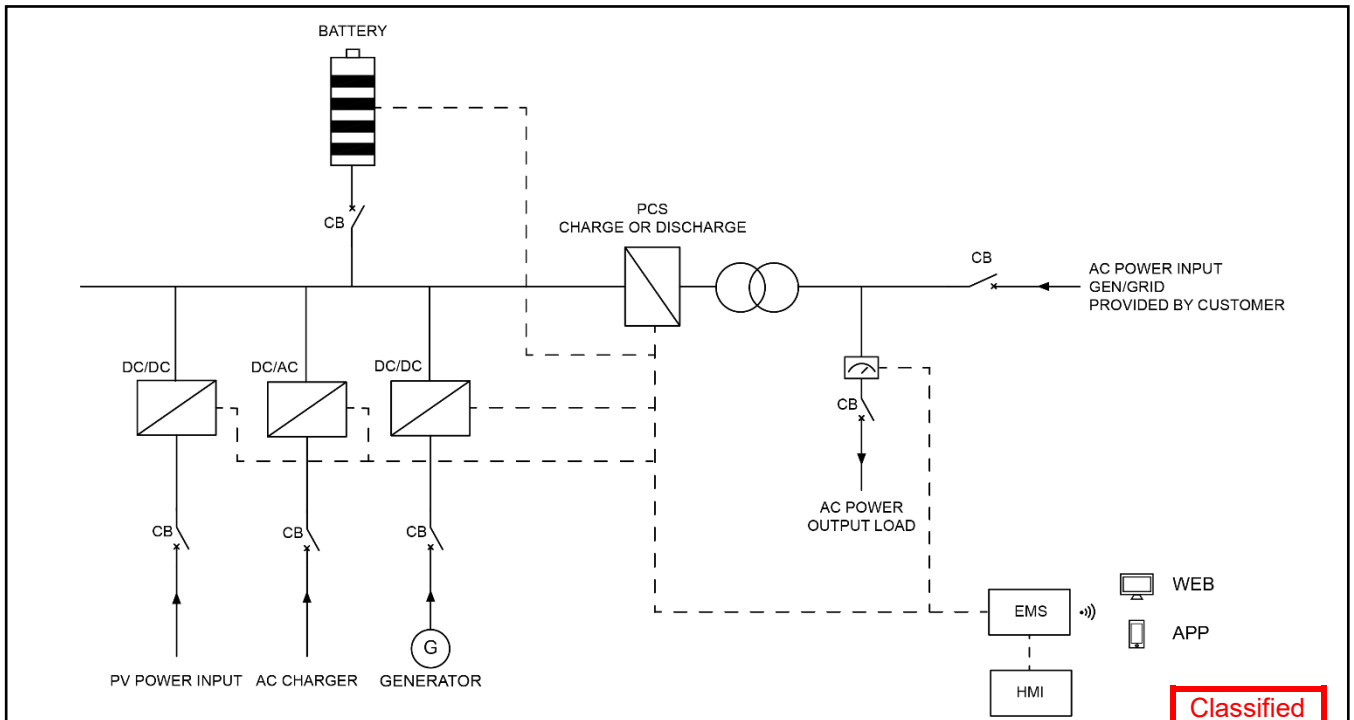


PHE200 Portable Hybrid Energy System				
Item	Unit	Data		
Output power	kVA/kW	200/200		
Frequency	Hz	50		
Phase	P	3		
Power factor	PF	1		
Dimensions	mm	4340×2290×2525		
Dry weight	kg	7000		
40° Loading	Qty	2		
Protection class		IP54		
Noise level	dBA@7m	58		
Voltage	AC V	380	400	415
Current	A	304	289	278
Wiring port		L1、L2、L3、N、PE		
Voltage regulation range		±1%		
Load adaptation characteristics		Inductive load, resistive load		
Power connection input		AC socket: 3P/4W, 1x200kW, 1x50kW DC socket: 1x50kW		
Power connection output		AC socket: 3P/4W, 1x200kW AC socket: 1P		
Certification standards		 UN 38.3  IEC 62619  IEC 62477  IEC 62933-2-1  CE Declaration of Conformity  VDE-AR-N 4110  EN-50549-1  UL 1973		

Classified Document

2024.05

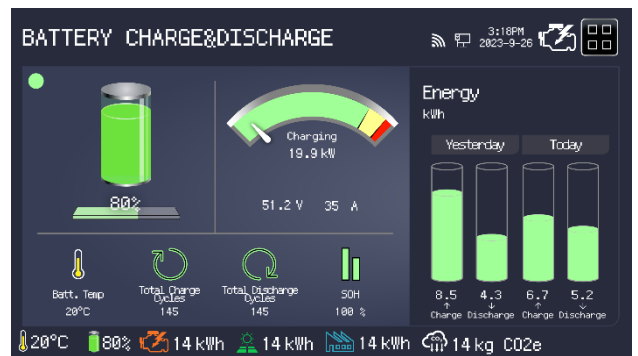
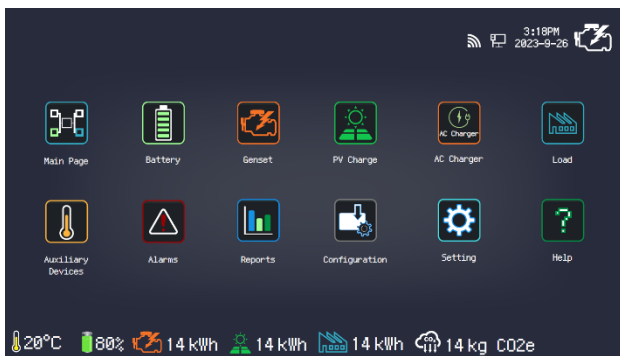
## System Working Principle



Classified Document

2024.05

## Intelligent Energy Management



DC/AC System		
Rated power	kVA/kW	200/200
Output voltage	AC V	415/240
Overload capability		110% last 10mins, 115% last 1min
Standby AC charger power	kW	50

PV SYSTEM		
Rated power	kWp	50
Input voltage	DC V	150-650
NOTE: Solar panels are optional.		

DIESEL GENERATOR SYSTEM		
Engine brand / model		KUBOTA / V3307
Rated power	kW	50
Rated voltage	DC V	600
Fuel Tank Capacity	L	800

Battery System		
Battery type		LiFePO4
Battery capacity	kWh	230
Rated voltage	DC V	768
Cooling system		Air-cooled
Max charging rate		1C
Max discharging rate		1C
Battery cycle life		>8000cycles(90%DOD, 1C)

CONTROL SYSTEM		
HMI control panel	inch	13" Touchscreen
Communication interface		WAN/WIFI/SIM
Cloud services		APP/WEB

\* Data is subject to change without prior notice as new products are always developed.  
Please contact POWERLINK or local agent with any doubts or for more information.

Classified  
Document  
2024.05