






PHE500

PORTABLE HYBRID ENERGY SYSTEM

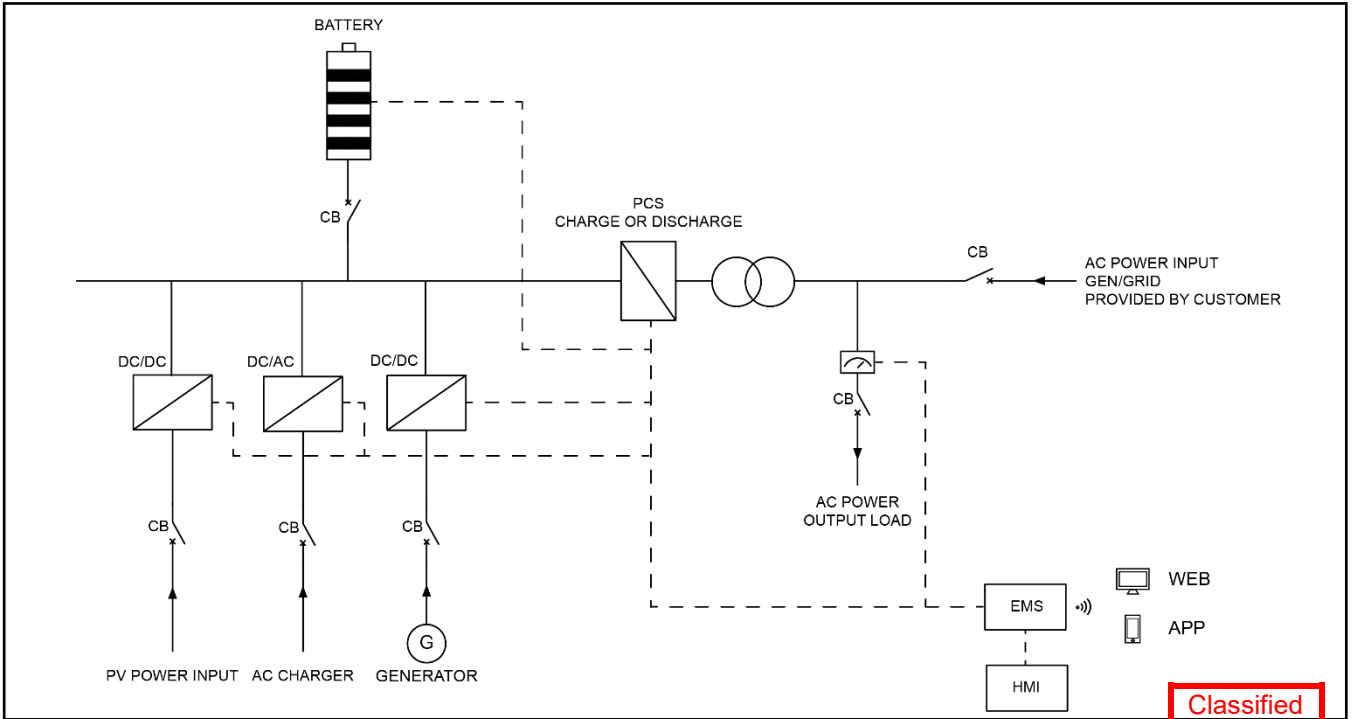
SPECIFICATION



PHE500 Portable Hybrid Energy System				
Item	Unit	Data		
Output power	kVA/kW	500/500		
Frequency	Hz	50		
Phase	P	3		
Power factor	PF	1		
Dimensions	mm	5400×2290×2525		
Dry weight	kg	10900		
40" Loading	Qty	2		
Protection class		IP54		
Noise level	dBA@7m	58		
Voltage	AC V	380	400	415
Current	A	760	722	696
Wiring port		L1、L2、L3、N、PE		
Voltage regulation range		±1%		
Load adaptation characteristics		Inductive load, resistive load		
Power connection input		AC socket: 3P/4W, 1x500kW, 1x50kW DC socket: 1x50kW		
Power connection output		AC socket: 3P/4W, 1x500kW AC socket: 1P		
Certification standards		     <p>UN 38.3 IEC 62619 IEC 62477 IEC 62933-2-1 CE Declaration of Conformity VDE-AR-N 4110 EN-50549-1 UL 1973</p>		

Classified Document
2024.05

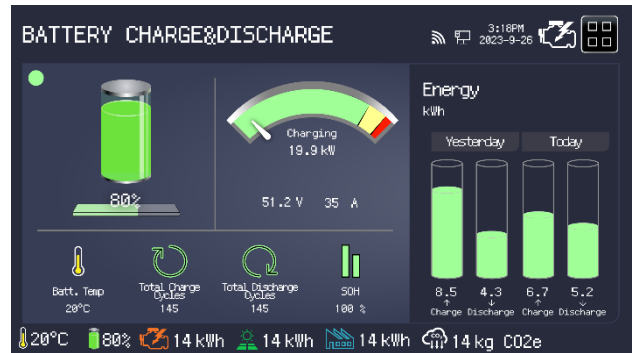
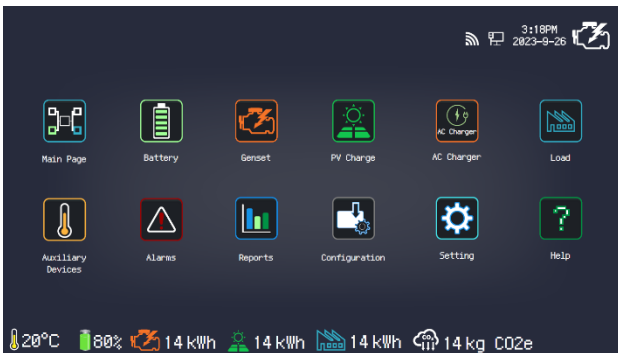
System Working Principle



Classified Document

2024.05

Intelligent Energy Management



DC/AC System		
Rated power	kVA/kW	500/500
Output voltage	AC V	415/240
Overload capability		110% last 10mins, 115% last 1min
Standby AC charger power	kW	50

PV SYSTEM		
Rated power	kWp	50
Input voltage	DC V	150-650
NOTE: Solar panels are optional.		

DIESEL GENERATOR SYSTEM		
Engine brand / model		KUBOTA / V3307
Rated power	kW	50
Rated voltage	DC V	600
Fuel Tank Capacity	L	800

Battery System		
Battery type		LiFePO4
Battery capacity	kWh	576
Rated voltage	DC V	768
Cooling system		Air-cooled
Max charging rate		1C
Max discharging rate		1C
Battery cycle life		>8000cycles(90%DOD, 1C)

CONTROL SYSTEM		
HMI control panel	inch	13" Touchscreen
Communication interface		WAN/WIFI/SIM
Cloud services		APP/WEB

* Data is subject to change without prior notice as new products are always developed.
Please contact POWERLINK or local agent with any doubts or for more information.

Classified
Document
2024.05