




# EUPS100

UNINTERRUPTIBLE POWER SUPPLY SYSTEM

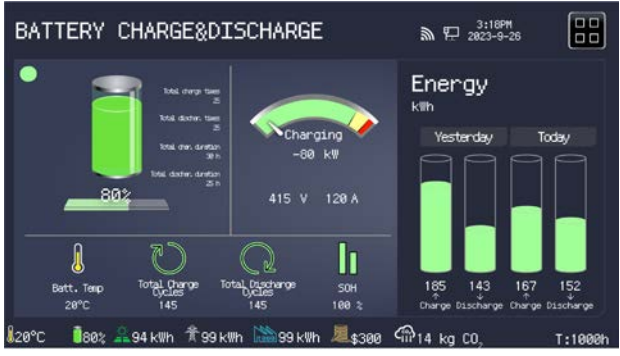
## SPECIFICATION



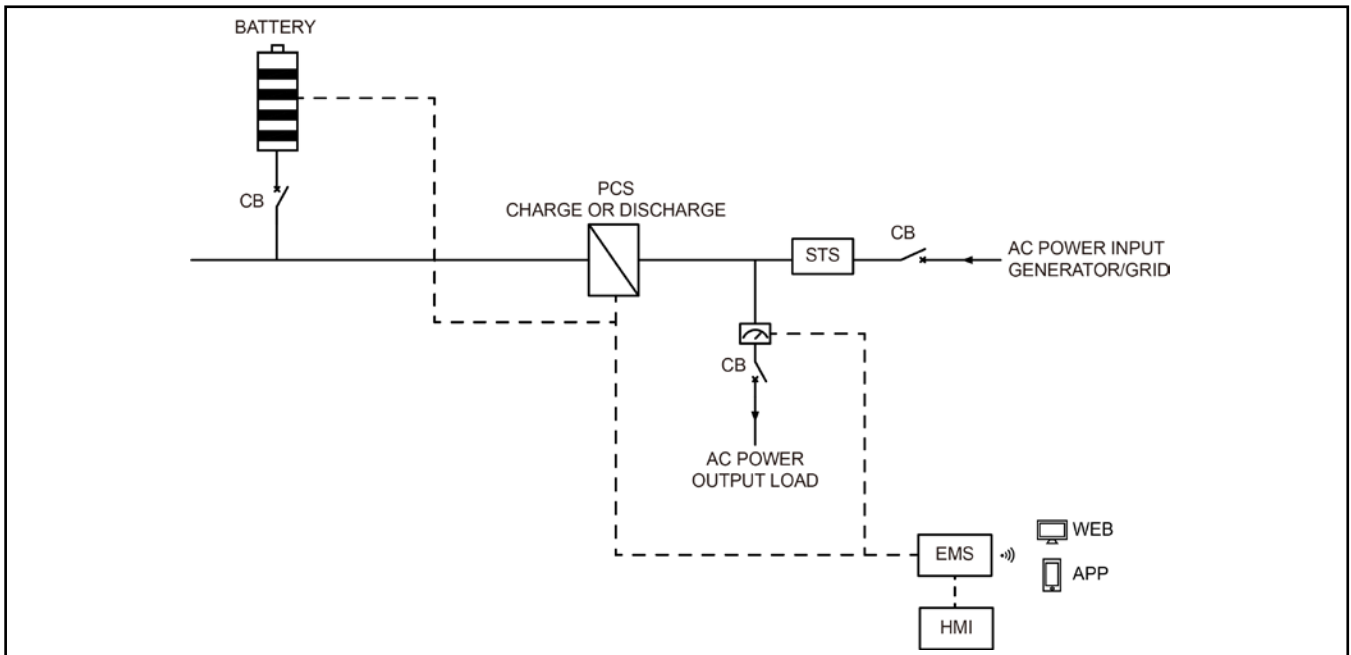
EUPS100 Uninterruptible Power Supply System				
Item	Unit	Data		
Output power	kVA/kW	100/100		
Frequency	Hz	50		
Phase	P	3		
Power factor	PF	1		
Dimensions	mm	2250x1350x2250		
Dry weight	kg	3701		
40' Loading	Qty	8		
Protection class		IP54		
Noise level	dBA@7m	58		
Voltage	AC V	380	400	415
Current	A	152	144	139
Wiring port		L1、L2、L3、N、PE		
Voltage regulation range		±1%		
Load adaptation characteristics		Inductive load, resistive load		
Power connection input		AC socket: 3P/4W, 1x100kW		
Power connection output		AC socket: 3P/4W, 1x100kW		
Certification standards		 UN 38.3 IEC 62619 IEC 62477  IEC / EN 60529  EN 61000-6-1/2/3/4 AS 4777.2 G99 CE Declaration of Conformity		

**Classified Document**  
 2024.12.12

## Intelligent Energy Management



## System Working Principle



DC/AC System		
Rated power	kVA/kW	100/100
Output voltage	AC V	380/400/415

Grid Power Input		
Rated power	kVA/kW	100/100
Phase	P	3

Battery System		
Battery type		LiFePO4
Battery capacity	kWh	115.2
Rated voltage	DC V	768
Cooling system		Air-cooled
Max charging rate		1C
Max discharging rate		1C
NOTE: The discharge power decreases as the battery SOC decreases.		

Control System		
HMI control panel	inch	10.3" Touchscreen
Communication interface		WAN/WIFI/SIM
Cloud services		APP/WEB

\* Data is subject to change without prior notice as new products are always developed. Please contact POWERLINK or local agent with any doubts or for more information.

Classified  
 Document  
 2024.12.12