





# EUPS300

UNINTERRUPTIBLE POWER SUPPLY SYSTEM

## SPECIFICATION



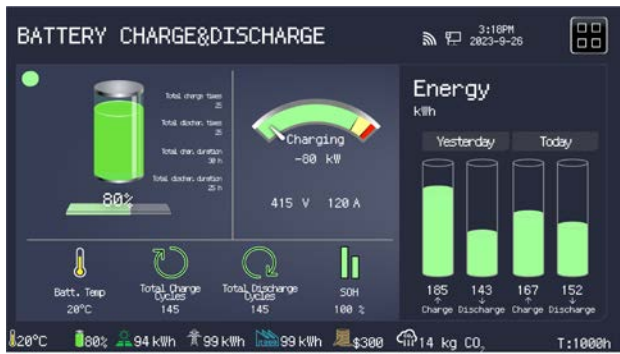
## EUPS300 Uninterruptible Power Supply System

Item	Unit	Data		
Output power	kVA/kW	300/300		
Frequency	Hz	50		
Phase	P	3		
Power factor	PF	1		
Dimensions	mm	4650x2300x2500		
Dry weight	kg	9424		
40' Loading	Qty	2		
Protection class		IP54		
Noise level	dB(A)@7m	58		
Voltage	AC V	380	400	415
Current	A	456	433	417
Wiring port		L1、L2、L3、N、PE		
Voltage regulation range		±1%		
Load adaptation characteristics		Inductive load, resistive load		
Power connection input		AC socket: 3P/4W, 1x300kW		
Power connection output		AC socket: 3P/4W, 1x300kW		
Certification standards		<div style="display: flex; align-items: flex-start; gap: 20px;"> <div style="text-align: center;">  <p>UN 38.3 PASSED Transport Safety Certified</p> </div> <div style="text-align: center;">  <p>ISO 9001</p> </div> <div style="text-align: center;">  <p>CE</p> </div> <div style="text-align: center;">  <p>IEC</p> </div> <div style="flex-grow: 1;"> <p>UN 38.3 IEC 62619 IEC 62477 IEC / EN 60529 EN 61000-6-1/2/3/4 AS 4777.2 G99 CE Declaration of Conformity</p> </div> </div>		

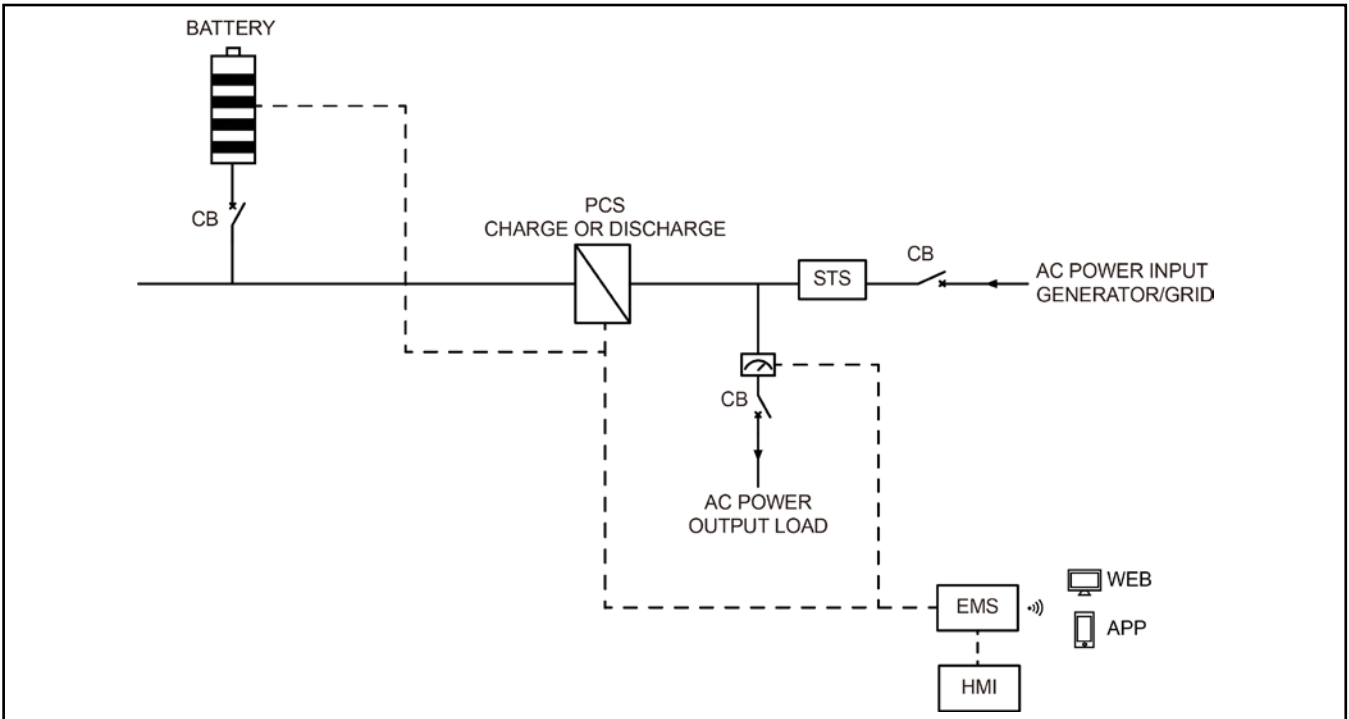
Classified Document

2024.12.12

### Intelligent Energy Management



**System Working Principle**



**DC/AC System**

Rated power	kVA/kW	300/300
Output voltage	AC V	380/400/415

**Grid Power Input**

Rated power	kVA/kW	300/300
Phase	P	3

**Battery System**

Battery type		LiFePO4
Battery capacity	kWh	345.6
Rated voltage	DC V	768
Cooling system		Air-cooled
Max charging rate		1C
Max discharging rate		1C

NOTE: The discharge power decreases as the battery SOC decreases.

**Control System**

HMI control panel	inch	13" Touchscreen
Communication interface		WAN/WIFI/SIM
Cloud services		APP/WEB

\* Data is subject to change without prior notice as new products are always developed. Please contact POWERLINK or local agent with any doubts or for more information.

Classified Document  
2024.12.12