

### Main Configuration

- ATS switch ( with intelligent controller )
- ATS communication connector
- Control signal terminals
- Grounding copper bar
- Electrical mounting plate(aluminum zinc coated plate )
- Standard electric cabinet

### ATS Main Performance

- Padlock and on-off position indication, reliably realize the isolation of power supply and load.
- Four operating functions:
  - ✧ Emergency manual operation
  - ✧ Electric remote control operation
  - ✧ Emergency disconnect operation under automatic control state
  - ✧ Automatic control operation
- Three working states (I-O-II):
  - ✧ Common closing and standby opening;
  - ✧ Common opening, standby closing;
  - ✧ Common and standby power sources are both disconnected.

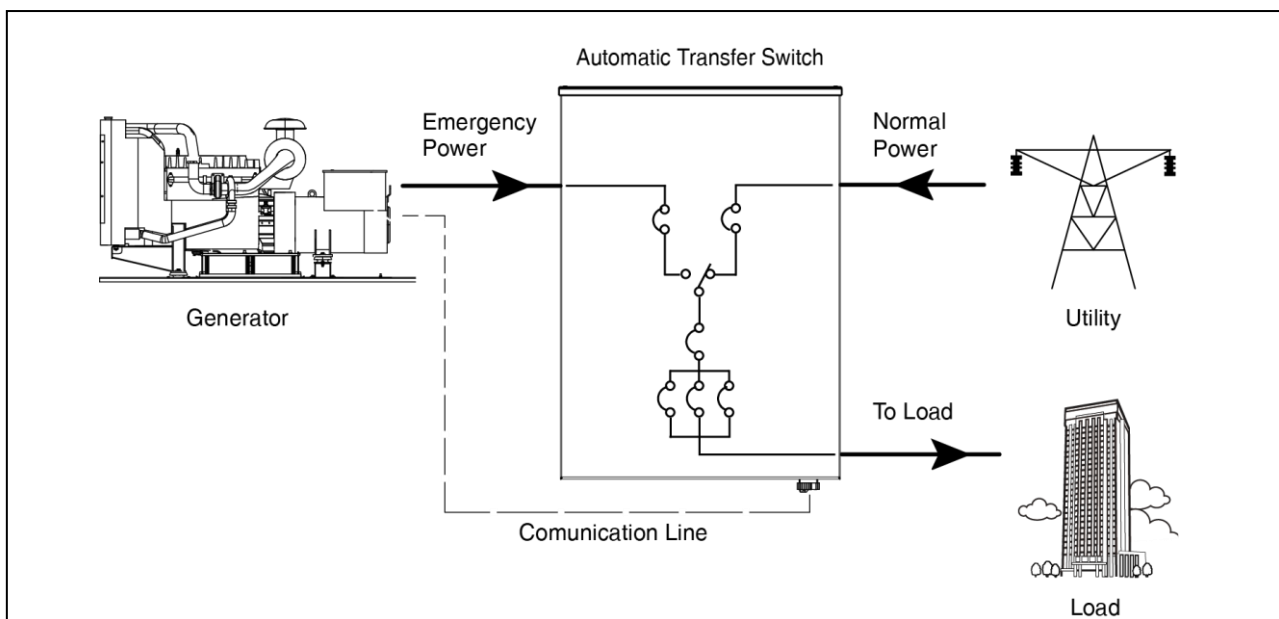
### Working Conditions

- Ambient temperature :  $-25^{\circ}\text{C} \sim +70^{\circ}\text{C}$
- Altitude : Below 2000m
- Humidity : Less than 80%



### Main Features

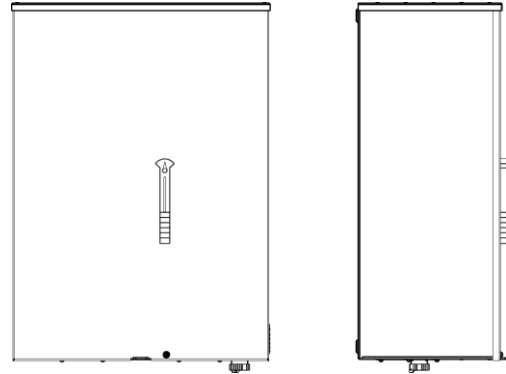
1. Intelligent controller uses IC as the control core.
2. Adopte built-in sampling line.
3. Strong anti-interference ability.
4. Full functions, with overvoltage, undervoltage and open phase switching.
5. Double breakpoint horizontal pull mechanism is adopted, which is safe and reliable in switching on and off.
6. The actuating load disconnecting switch is equipped with mechanical interlock.
7. Normal and standby power sources work reliably with non inference.
8. Adopt the zero-position technology, which can be set to zero compulsivly in case of emergency.
9. Protection class: IP54, outdoor application.



### Main Technical Data

|  |                       |
|--|-----------------------|
| Rated operating current $I_e$ (A)      | 32A                   |
| Rated working voltage $U_e$            | AC400V                |
| Rated control voltage $U_c$            | AC220V,<br>DC24V, 48V |
| Rated working frequency $F_r$          | 50Hz                  |
| Rated insulation voltage $U_i$         | 690V                  |
| Impulse withstand voltage $U_{imp}$    | 8kV                   |
| Use category                           | AC-33B                |
| Short circuit making capacity $I_{cm}$ | 8kA                   |
| Short time withstand current $I_{cw}$  | 5kA/30ms              |
| Switching time                         | 2.5 s                 |

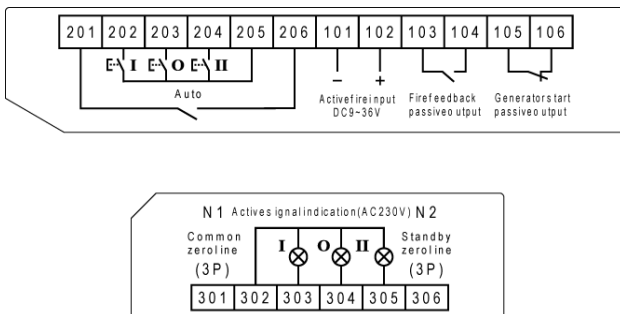
### Overall Dimension



| Model | Length | Width | Height | Weight |
|-------|--------|-------|--------|--------|
| PC32A | 500    | 280   | 705    | 20 kg  |

Dimension unit: mm

### ATS Communication Diagram



### Design Standard

- IEC60947-1/GB/T 14048-2000 Low-voltage switchgear and controlgear— General rules
- IEC60947-3/GB 14048.3 Low voltage switchgear and controlgear switches, disconnectors, switch-disconnectors and fuse-combination units
- IEC60947-6-1/GB 14048.11 Automatic transfer switchgear equipment