






# PES500

PORTABLE HYBRID ENERGY SYSTEM

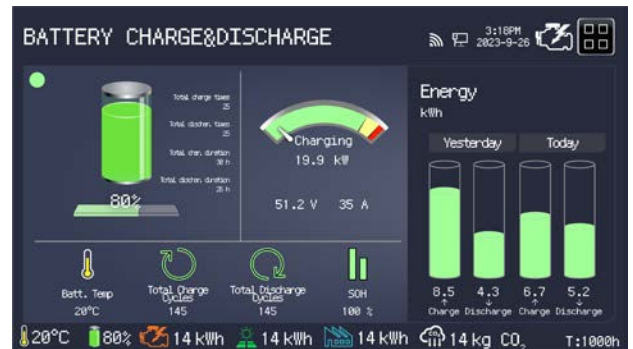
## SPECIFICATION



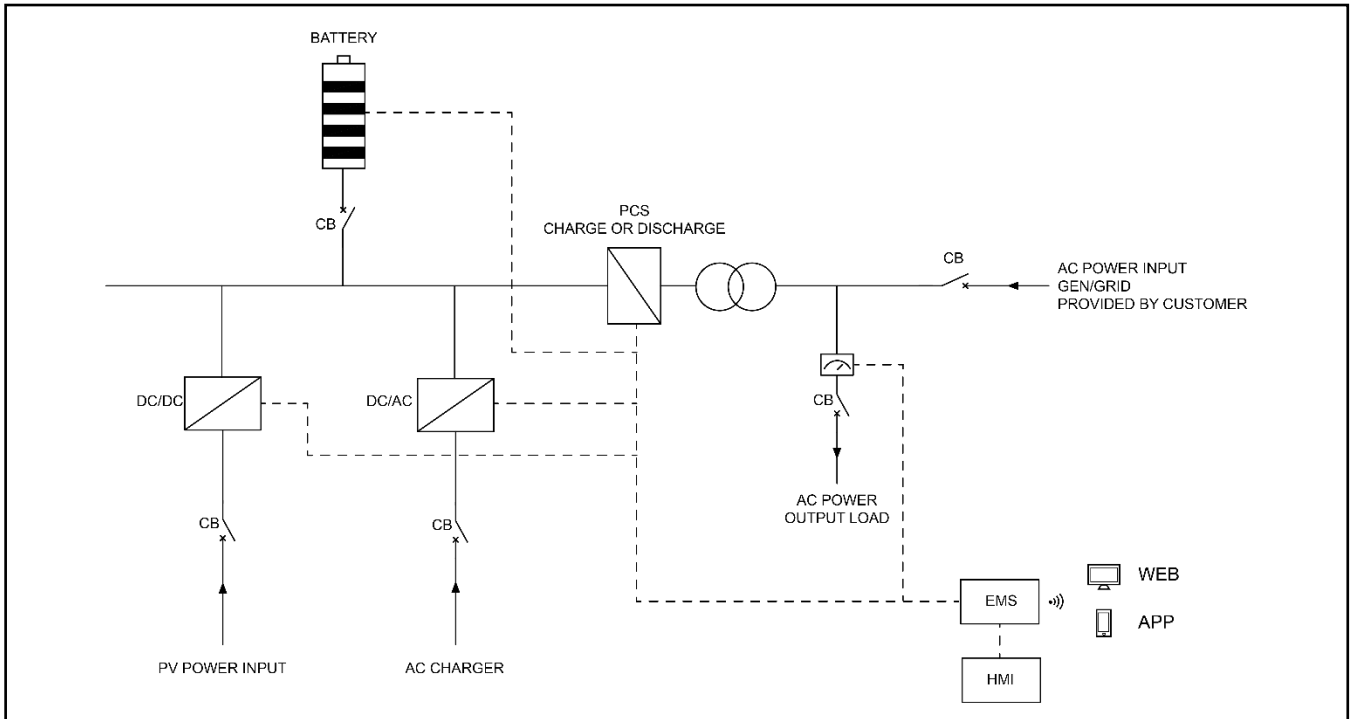
| PES500 Portable Hybrid Energy System |        |   |     |     |
|--------------------------------------|--------|---|-----|-----|
| Item                                 | Unit   | Data  |     |     |
| Output power                         | kVA/kW | 500/500   |     |     |
| Frequency                            | Hz     | 50  |     |     |
| Phase                                | P      | 3   |     |     |
| Power factor                         | PF     | 1   |     |     |
| Dimensions                           | mm     | 4650×2300×2500  |     |     |
| Dry weight                           | kg     | 14240   |     |     |
| 40' Loading                          | Qty    | 2   |     |     |
| Protection class                     |        | IP54  |     |     |
| Noise level                          | dBA@7m | 58  |     |     |
| Voltage                              | AC V   | 380   | 400 | 415 |
| Current                              | A      | 760   | 722 | 696 |
| Wiring port                          |        | L1、L2、L3、N、PE   |     |     |
| Voltage regulation range             |        | ±1%   |     |     |
| Load adaptation characteristics      |        | Inductive load, resistive load  |     |     |
| Power connection input               |        | AC socket: 3P/4W, 1x500kW, 1x50kW<br>DC socket: 1x50kW  |     |     |
| Power connection output              |        | AC socket: 3P/4W, 1x500kW<br>AC socket: 1P  |     |     |
| Certification standards              |        |  UN 38.3<br> IEC 62619<br> IEC 62477<br> IEC / EN 60529<br> EN 61000-6-1/2/3/4<br>CE Declaration of Conformity |     |     |

**Classified Document**  
 2024.12.12

## Intelligent Energy Management



## System Working Principle



| DC/AC System             |        |             |
|--------------------------|--------|-------------|
| Rated power              | kVA/kW | 500/500     |
| Output voltage           | AC V   | 380/400/415 |
| Standby AC charger power | kW     | 50          |

| PV System                        |      |         |
|----------------------------------|------|---------|
| Rated power                      | kWp  | 50      |
| Input voltage                    | DC V | 150-650 |
| NOTE: Solar panels are optional. |      |         |

| Battery System  |      |            |
|---|------|------------|
| Battery type  |      | LiFePO4    |
| Battery capacity  | kWh  | 576        |
| Rated voltage   | DC V | 768        |
| Cooling system  |      | Air-cooled |
| Max charging rate   |      | 1C         |
| Max discharging rate  |      | 1C         |
| NOTE: The discharge power decreases as the battery SOC decreases. |      |            |

| Control System          |      |                 |
|-------------------------|------|-----------------|
| HMI control panel       | inch | 13" Touchscreen |
| Communication interface |      | WAN/WIFI/SIM    |
| Cloud services          |      | APP/WEB         |

\* Data is subject to change without prior notice as new products are always developed. Please contact POWERLINK or local agent with any doubts or for more information.

**Classified Document**  
 2024.12.12