





PHE375

PORTABLE HYBRID ENERGY SYSTEM

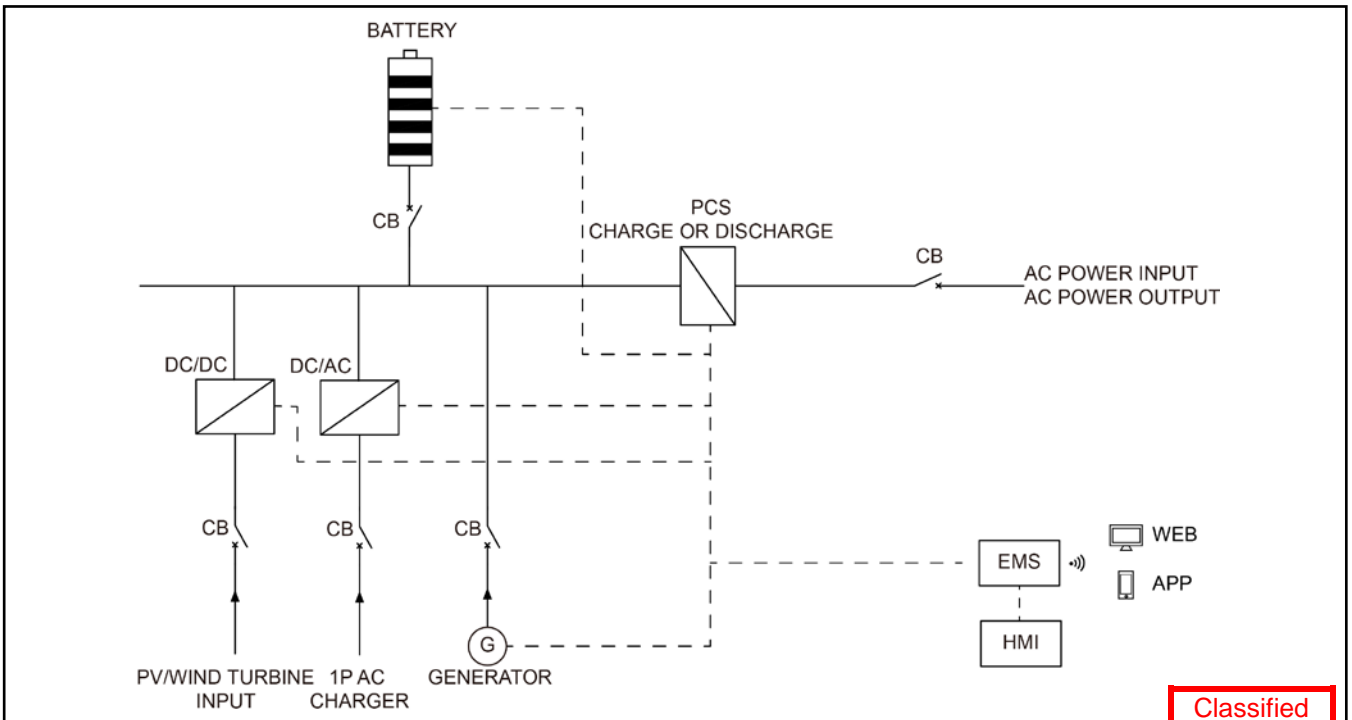
SPECIFICATION



| PHE375 Portable Hybrid Energy System | | | | |
|--------------------------------------|--------|--|---|-----|
| Item | Unit | Data | | |
| Output power | kVA/kW | 375/375 | | |
| Frequency | Hz | 50 | | |
| Phase | P | 3 | | |
| Power factor | PF | 1 | | |
| Dimensions | mm | 3950×2000×2250 | | |
| Dry weight | kg | 7500 | | |
| 40' Loading | Qty | 3 | | |
| Protection class | | IP54 | | |
| Noise level | dBA@7m | 58 | | |
| Voltage | AC V | 380 | 400 | 415 |
| Current | A | 570 | 541 | 522 |
| Wiring port | | L1、L2、L3、N、PE | | |
| Voltage regulation range | | ±1% | | |
| Load adaptation characteristics | | Inductive load, resistive load | | |
| Power connection input | | AC socket & busbar: 3P/4W, 1x375kW DC socket: 1x100kW AC socket: 1P | | |
| Power connection output | | AC socket & busbar: 3P/4W, 1x375kW AC socket: 1P & 3P | | |
| Certification standards | |     | UN 38.3 IEC 62619 IEC 62477 IEC / EN 60529 EN 61000-6-1 EN 61000-6-2 EN 61000-6-3 EN 61000-6-4 CE Declaration of Conformity | |

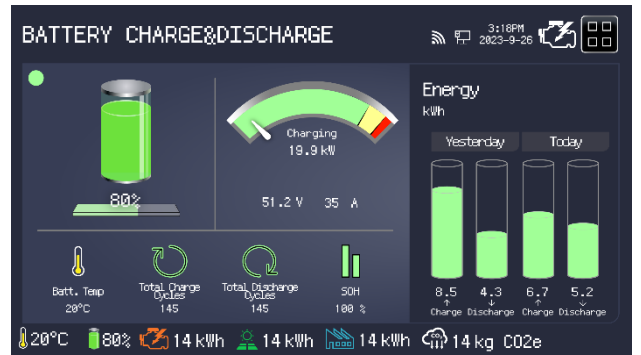
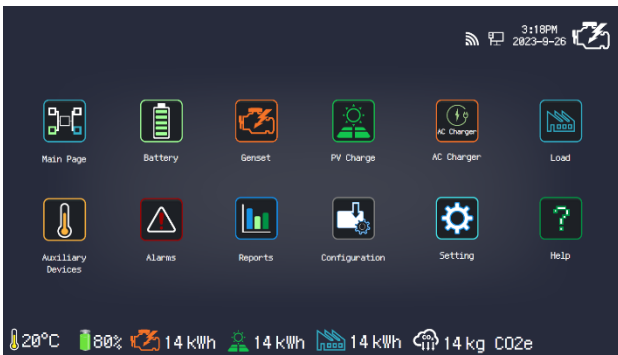
Classified
 Document
 2024.12.12

System Working Principle



Classified Document
2024.12.12

Intelligent Energy Management



| DC/AC System | | |
|----------------|--------|-------------|
| Rated power | kVA/kW | 375/375 |
| Output voltage | AC V | 380/400/415 |
| 1P AC charger | kVA/kW | 10/10 |

| PV System | | |
|----------------------------------|------|---------|
| Rated power | kWp | 100 |
| Input voltage | DC V | 541-749 |
| NOTE: Solar panels are optional. | | |

| Diesel Generator System | | |
|-------------------------|------|---------|
| Engine brand / model | | Cummins |
| Rated power | kW | 45 |
| Rated voltage | DC V | 541-749 |
| Fuel Tank Capacity | L | 560 |

| Battery System | | |
|---|------|---------------|
| Battery type | | LiFePO4 |
| Battery capacity | kWh | 380 |
| Rated voltage | DC V | 665.6 |
| Cooling system | | Liquid-cooled |
| Max charging rate | | 1C |
| Max discharging rate | | 1C |
| NOTE: The discharge power decreases as the battery SOC decreases. | | |

| Control System | | |
|-------------------------|------|-----------------|
| HMI control panel | inch | 13" Touchscreen |
| Communication interface | | WAN/WIFI/SIM |
| Cloud services | | APP/WEB |

* Data is subject to change without prior notice as new products are always developed.
Please contact POWERLINK or local agent with any doubts or for more information.

Classified
Document
2024.12.12