



GAS COGENERATION

— Distributed Energy System

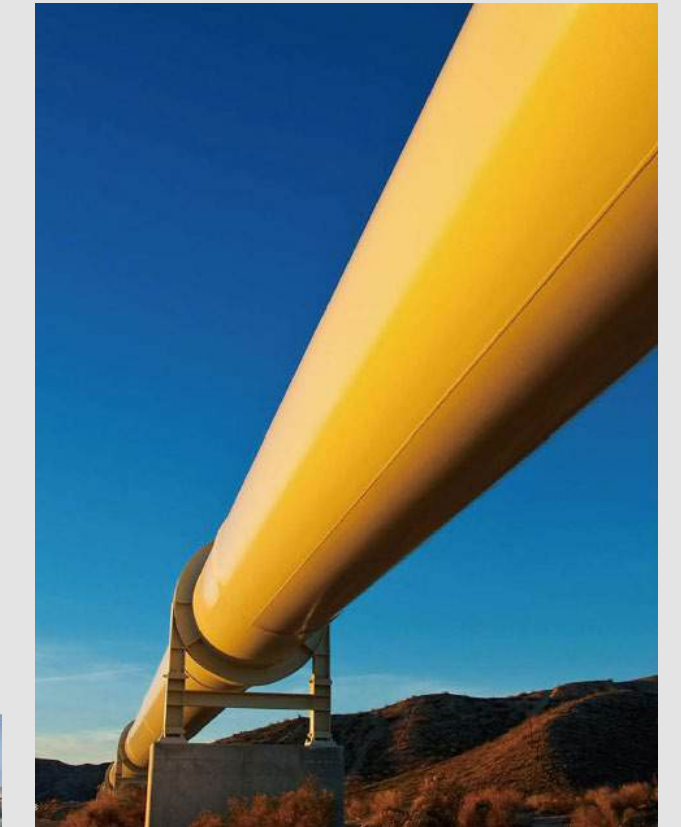
- Value
- Efficiency
- Environmental

POWERLINK GAS ENERGY EQUIPMENT

Powerlink gas CHP unit provider highly efficient distributed energy solutions for users. Powered by clean fuel such as natural gas, biogas and propane, these units generate electricity and heat energy. This achieves true combined heat and power. Power range 20-2300kW_e.

According to different installation locations and application requirements of each project, Powerlink provides investors with applicable types of energy equipment to meet different types of application needs of users.

- Digital energy efficiency management
- High efficiency generation and heat exchange technology
- Flexible grid-connection technology
- Automatic monitoring technology
- Modular structure design
- System complete lifecycle management
- Quick investment payback period



PRODUCT VIEW — ACG SERIES CHP

- Power Range: 20-50kWe

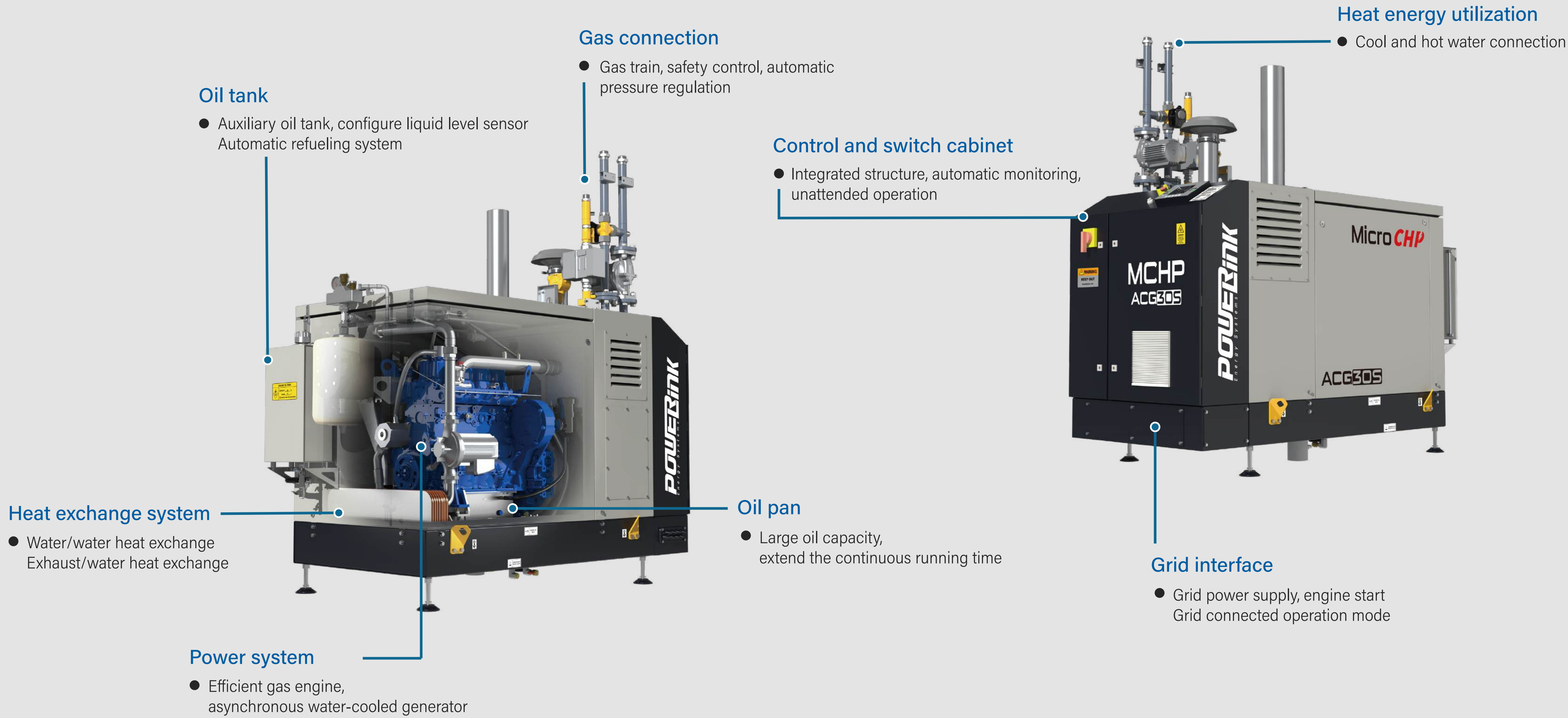


*Genset rated power: 30kWe/54kWt, Dimensions(LxWxH): 2079x1053x2160mm, Net weight: 1854kg

PRODUCT VIEW — ACG SERIES CHP



- Power Range: 20-50kWe



PRODUCT FEATURES — ACG SERIES CHP

- Power Range: 20-50kW_e

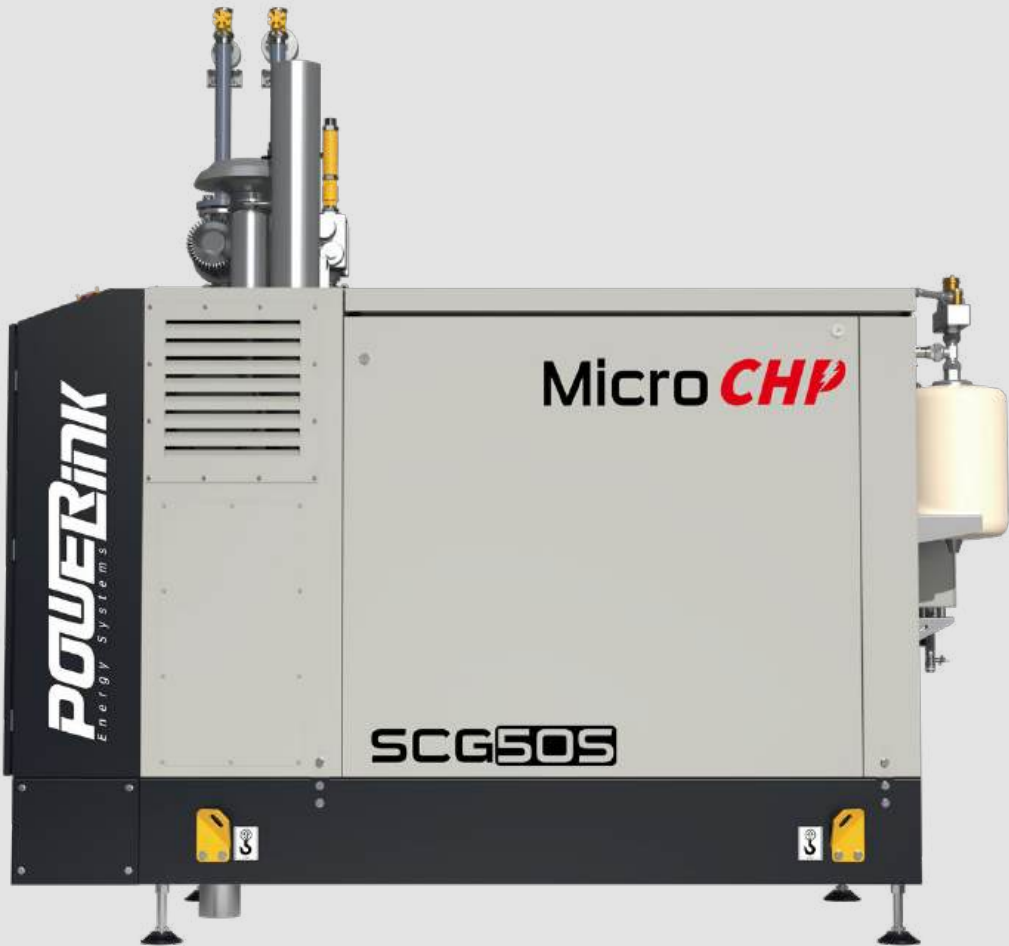
- Ambient temperature adaptability: -25 °C ~50 °C
- Outline structure: Small size, quick installation
- Asynchronous grid-connection technology: Grid-connected, residual power on line, full power on line
- Optional operating mode: Electricity first, heat first, fixed power
- High efficient heat transfer technology: Thermal efficiency exceeds 60%
- Modular structure design
- Automated monitoring technology
- 3000 hours maintenance interval
- Optional SCR after treatment system to meet high-level emission standards

POWERink
Energy Systems



PRODUCT VIEW — SCG SERIES CHP

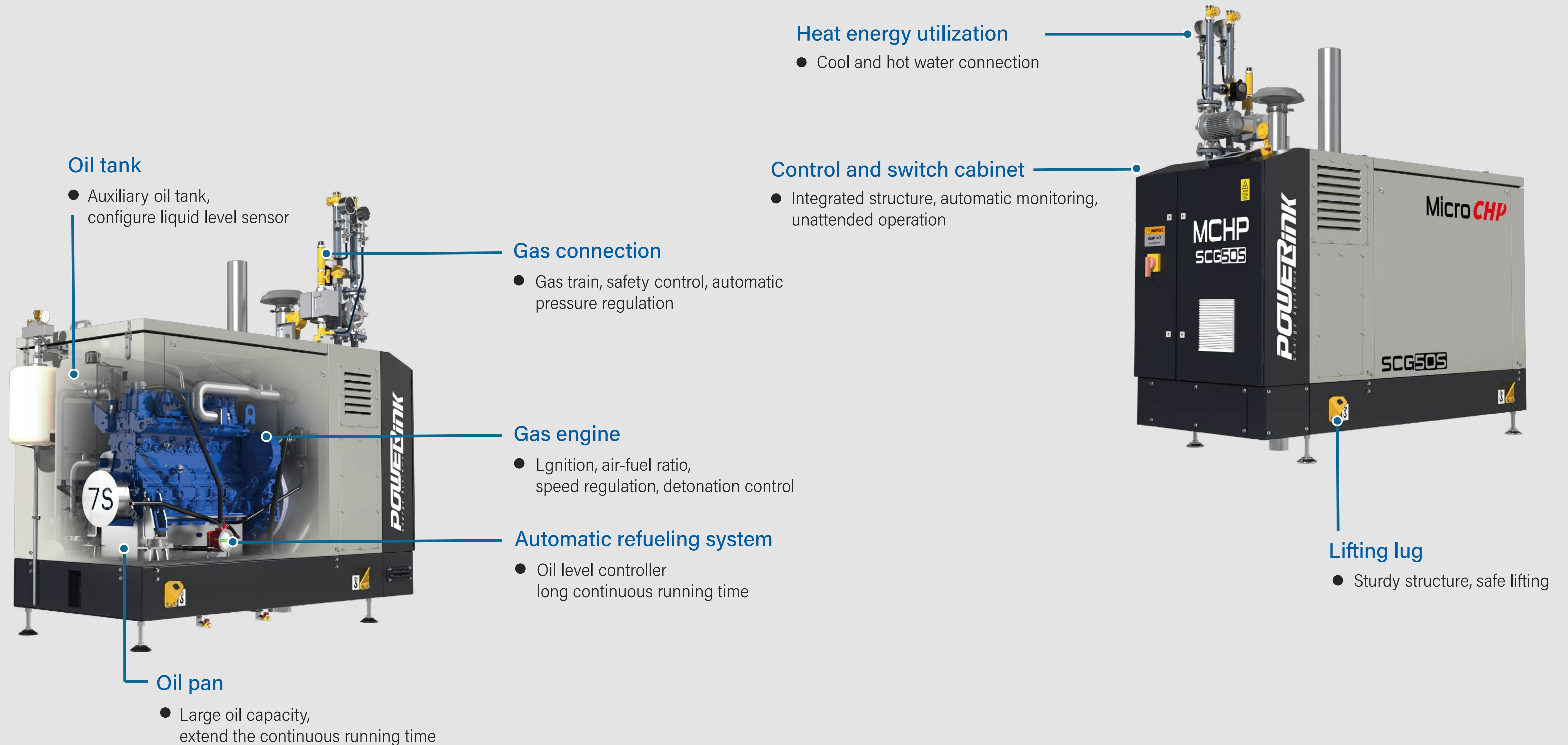
- Power Range: 20-50kWe



* Genset rated power: 50kWe/90kWt, Dimensions(LxWxH): 2500x1103x2454mm, Net weight: 2245kg

PRODUCT VIEW — SCG SERIES CHP

- Power Range: 20-50kWe



PRODUCT FEATURES — SCG SERIES CHP

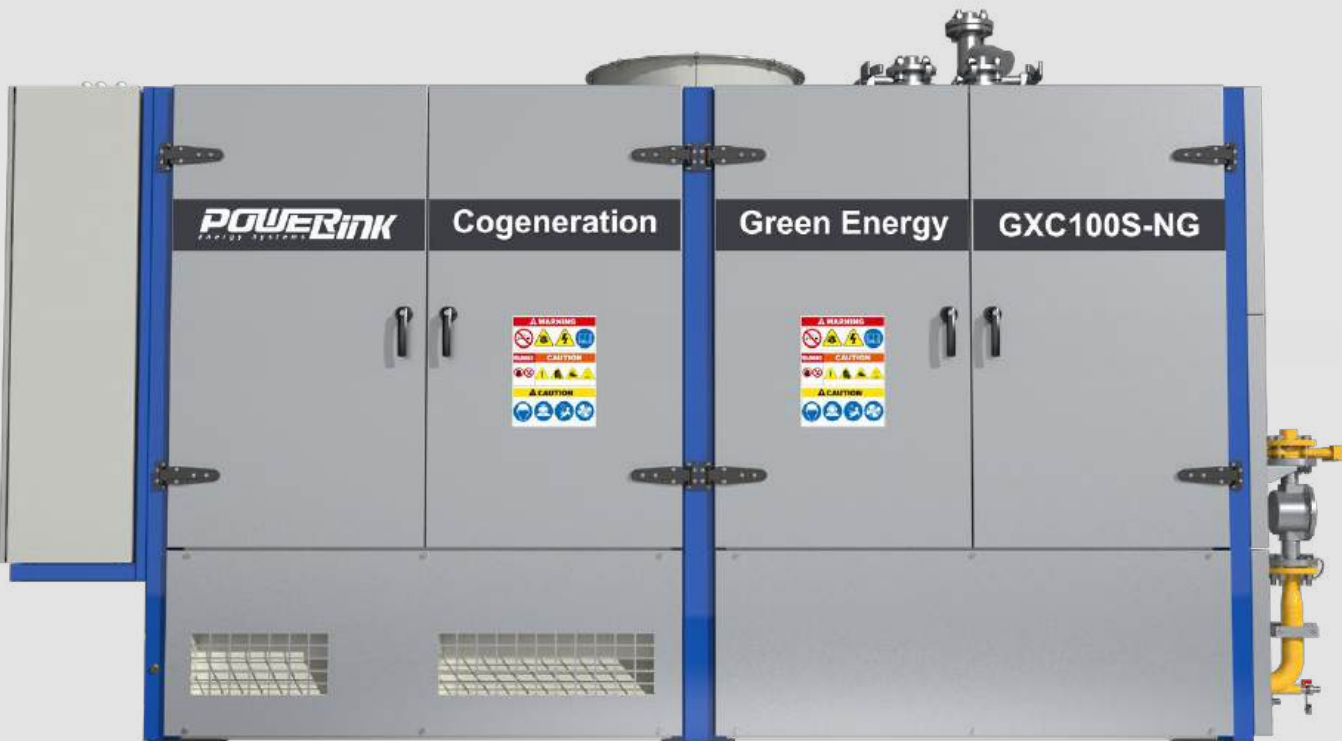
- Power Range: 20-50kWe

- Ambient temperature adaptability: -25 °C ~50 °C
- Outline structure: Small size, quick installation
- Synchronous grid-connection technology: Grid-connected, residual power on line, full power on line
- High efficient heat transfer technology: Thermal efficiency exceeds 60%
- Modular structure design
- System lifecycle management
- 3000 hours maintenance interval
- Automatic refueling system: Oil level controller, long continuous running time
- Optional SCR after treatment system to meet high-level emission standards



PRODUCT VIEW — GX, CG SERIES

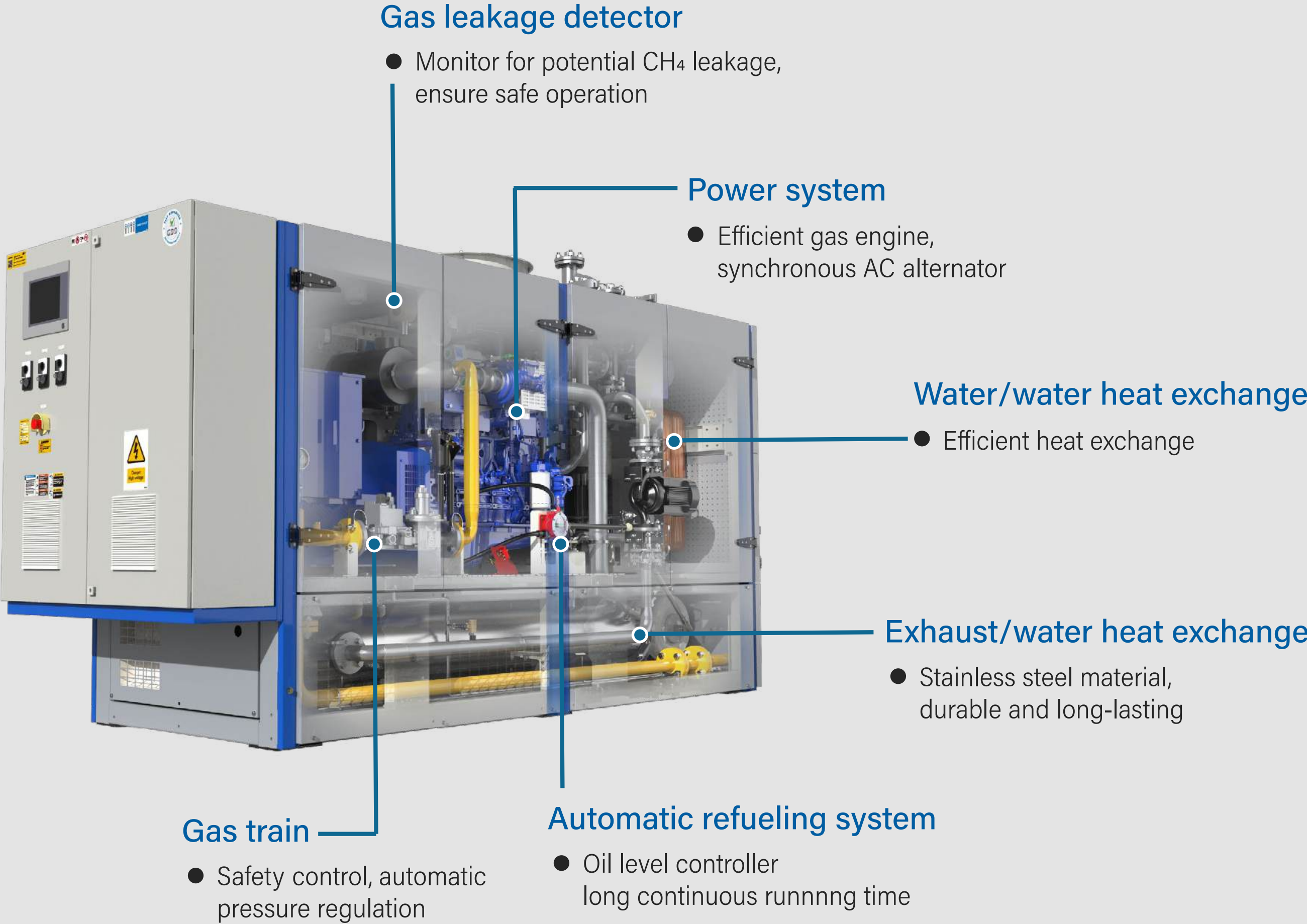
- Power Range: 50-560kWe



* Genset rated power: 100kWe/133kWt, Dimensions(LxWxH): 3904x1356x2219mm, Net weight: 4356kg

PRODUCT VIEW — GX, CG SERIES

- Power Range: 50-560kWe



PRODUCT FEATURES — GX, CG SERIES

- Power Range: 50-560kW

- Ambient temperature adaptability: $-25^{\circ}\text{C} \sim 50^{\circ}\text{C}$
- Silent structure: Equipped with sound-absorbing cotton to reduce noise
- Optional operating mode: Island operation, parallel operation and grid connected operation
- Flexible grid-connection technology
- Modular structure design
- Automated monitoring technology
- Quick investment payback period
- Romte radiator: Emergency radiator, intercooler radiator, meet 50°C ambient temperature
- Optional SCR after treatment system to meet high-level emission standards

POWERink
Energy Systems



PRODUCT VIEW – GX, CG SERIES, CONTAINER TYPE

- Power Range: 50-1000kWe



* Genset rated power: 250kWe/320kWt, Dimensions(LxWxH): 6058x2438x2896mm, Net weight: 11236kg

PRODUCT VIEW – GX, CG SERIES, CONTAINER TYPE

- Power Range: 50-1000kWe



Container structure

- Standard or non-standard design
- Corrosion resistant, sturdy structure

Top air outlet

- Independent air outlet radiator room, variable frequency fan, fuel saving, noise reduction

Access door

- Large size, easy to maintain

PCC300 control cabinet

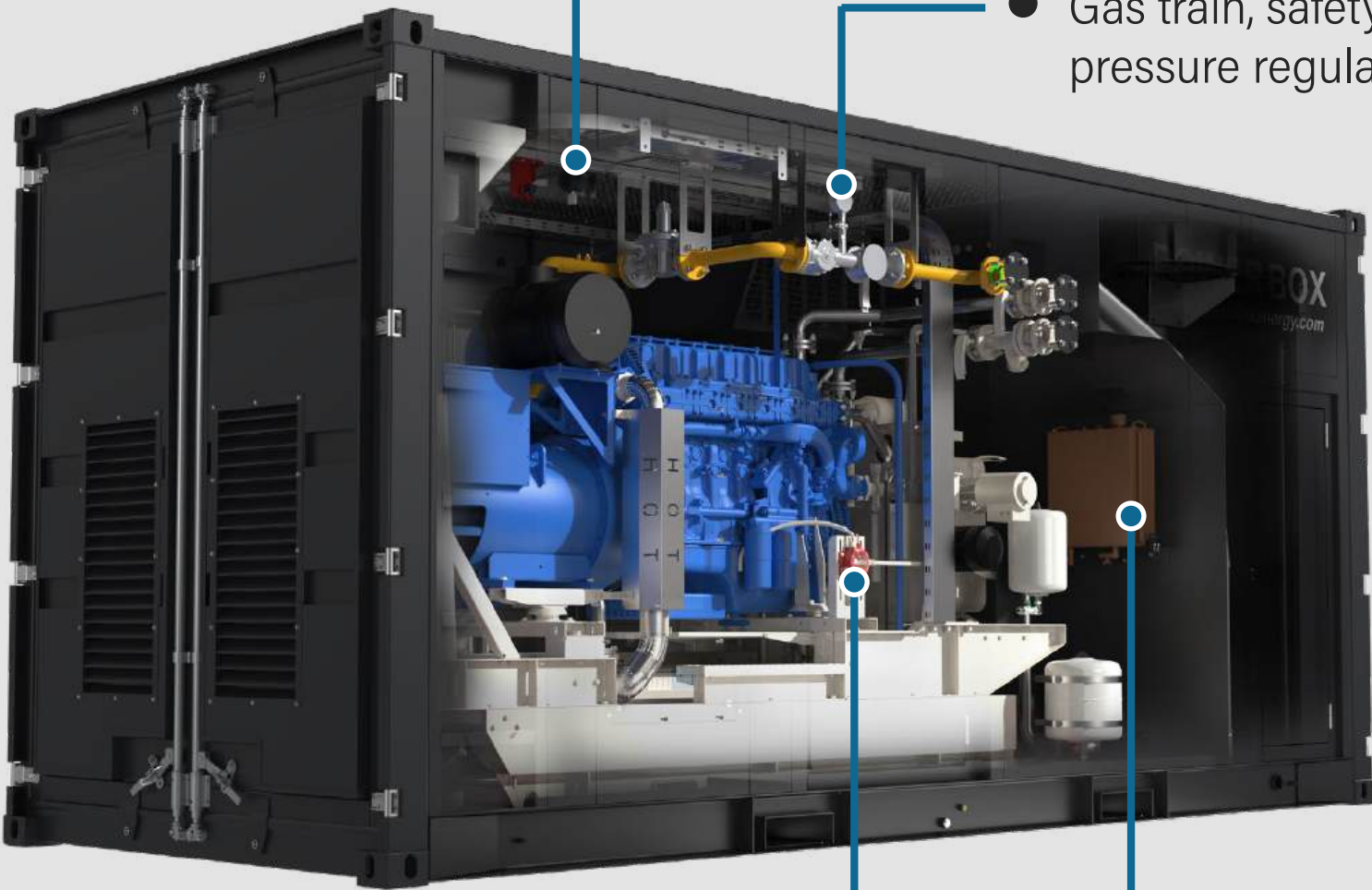
- Modular structure, plug and play, automatic monitoring, unattended operation

Gas leakage detector

- Monitor for potential CH₄ leakage, ensure safe operation

Gas connection

- Gas train, safety control, automatic pressure regulation



Oil tank

- Auxiliary oil tank, configure liquid level sensor

Automatic refueling system

- Oil level controller, long continuous running time

Heat exchange system

- Jacket coolant circulation pipeline
- Intercooler coolant circulation pipeline
- Hot and cool water circulation pipeline



PRODUCT FEATURES – GX, CG SERIES, CONTAINER TYPE



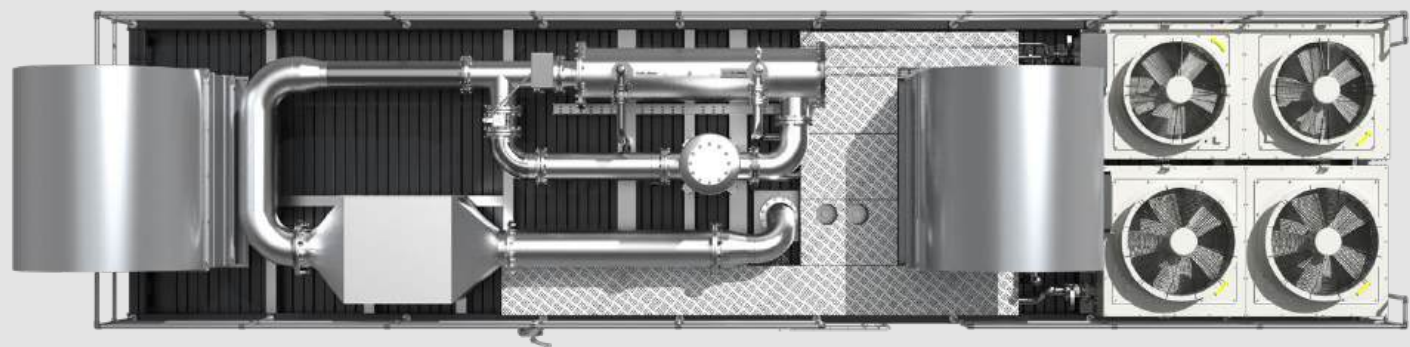
- Power Range: 50-1000kWe

- Ambient temperature adaptability: $-25^{\circ}\text{C} \sim 50^{\circ}\text{C}$
- Container structure: Standard or non-standard design, corrosion resistant, sturdy structure
- Optional operating mode: Island operation, parallel operation and grid connected operation
- Flexible grid-connection technology
- Quick investment payback period
- Modular structure design
- Automated monitoring technology
- Split type radiator: Emergency radiator, intercooler radiator, meet 50°C ambient temperature
- Optional SCR after treatment system to meet high-level emission standards



PRODUCT VIEW – TCG SERIES, CONTAINER TYPE

- Power Range: 600-2300kWe



* Genset rated power: 800kWe/855kWt, Dimensions(LxWxH): 12192x3000x4470mm, Net weight: 28291kg

PRODUCT VIEW – TCG SERIES, CONTAINER TYPE

- Power Range: 600-2300kW



PRODUCT FEATURES – TCG SERIES, CONTAINER TYPE

- Power Range: 600-2300kW

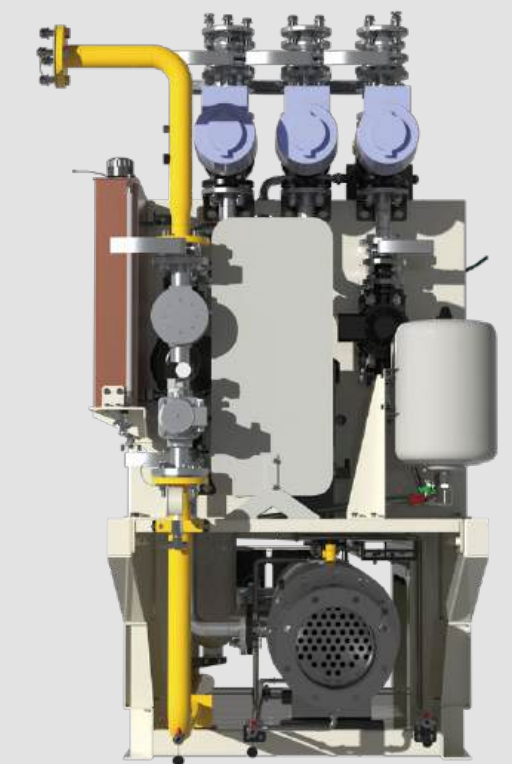
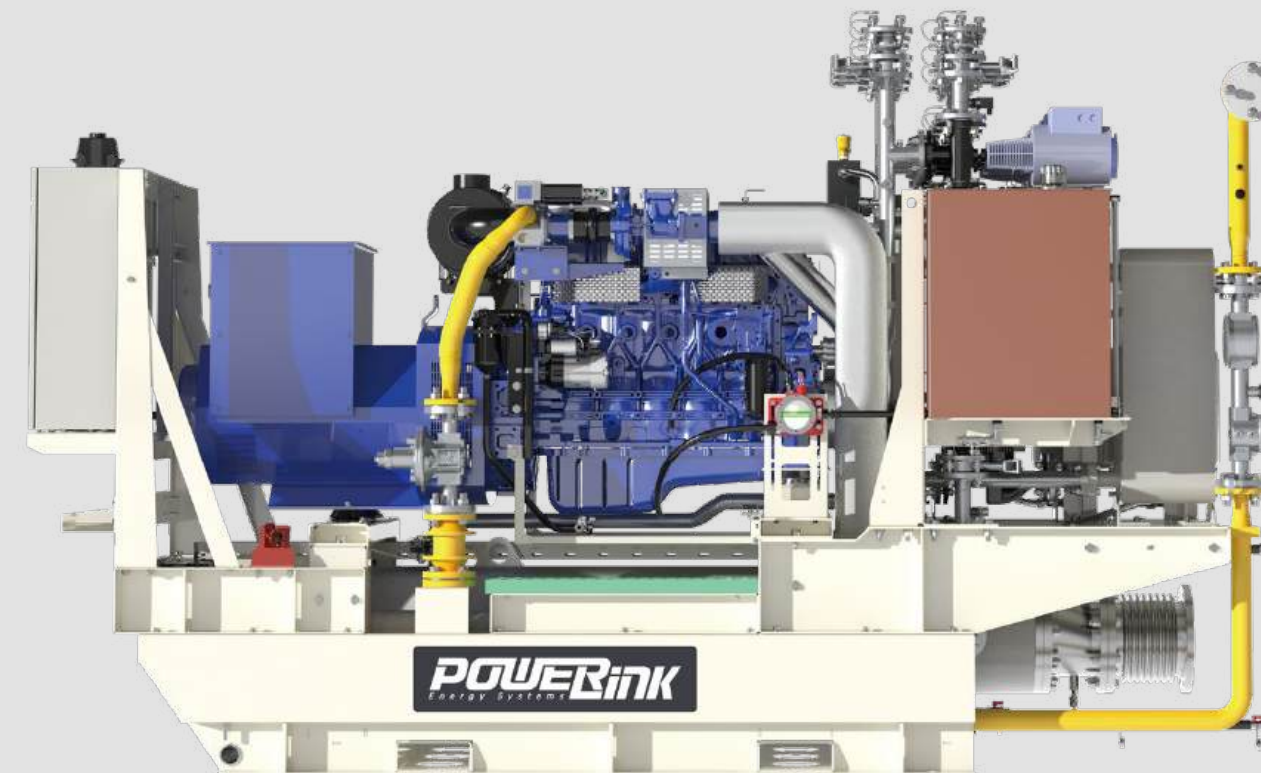
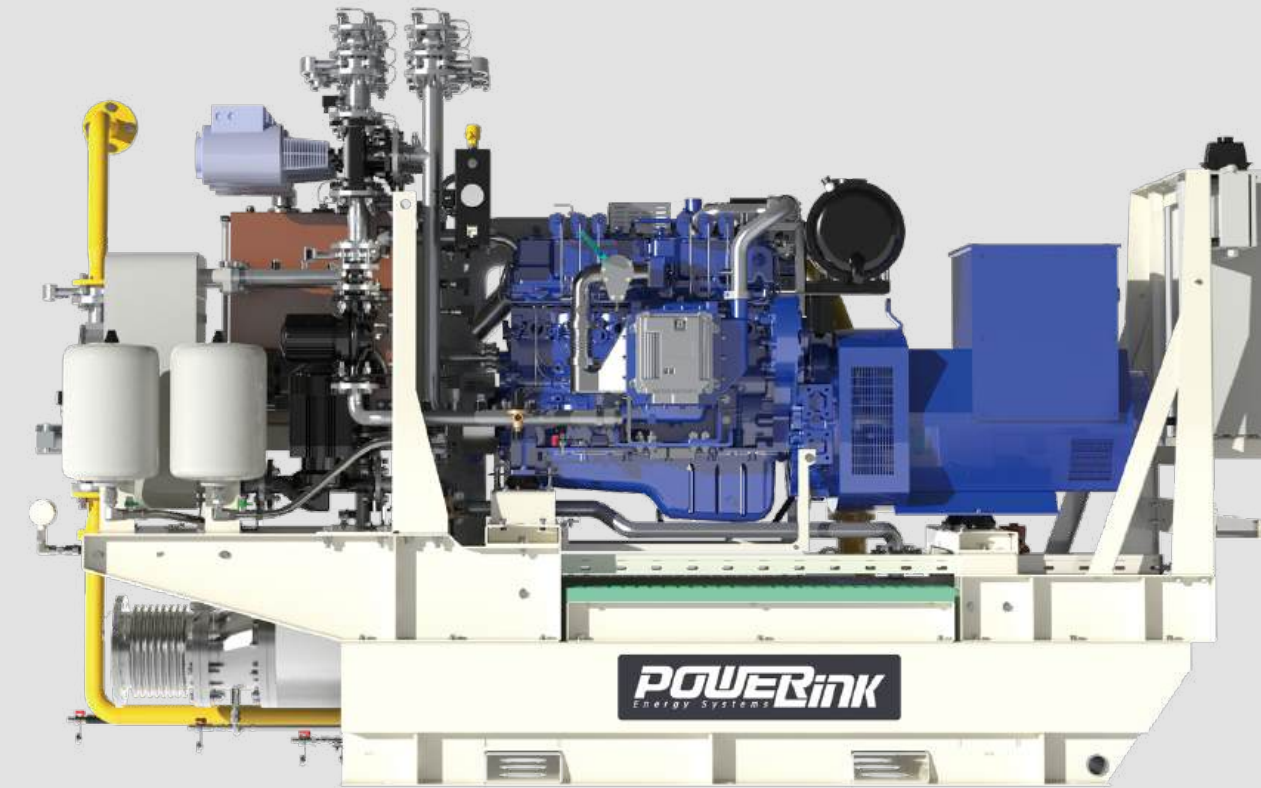
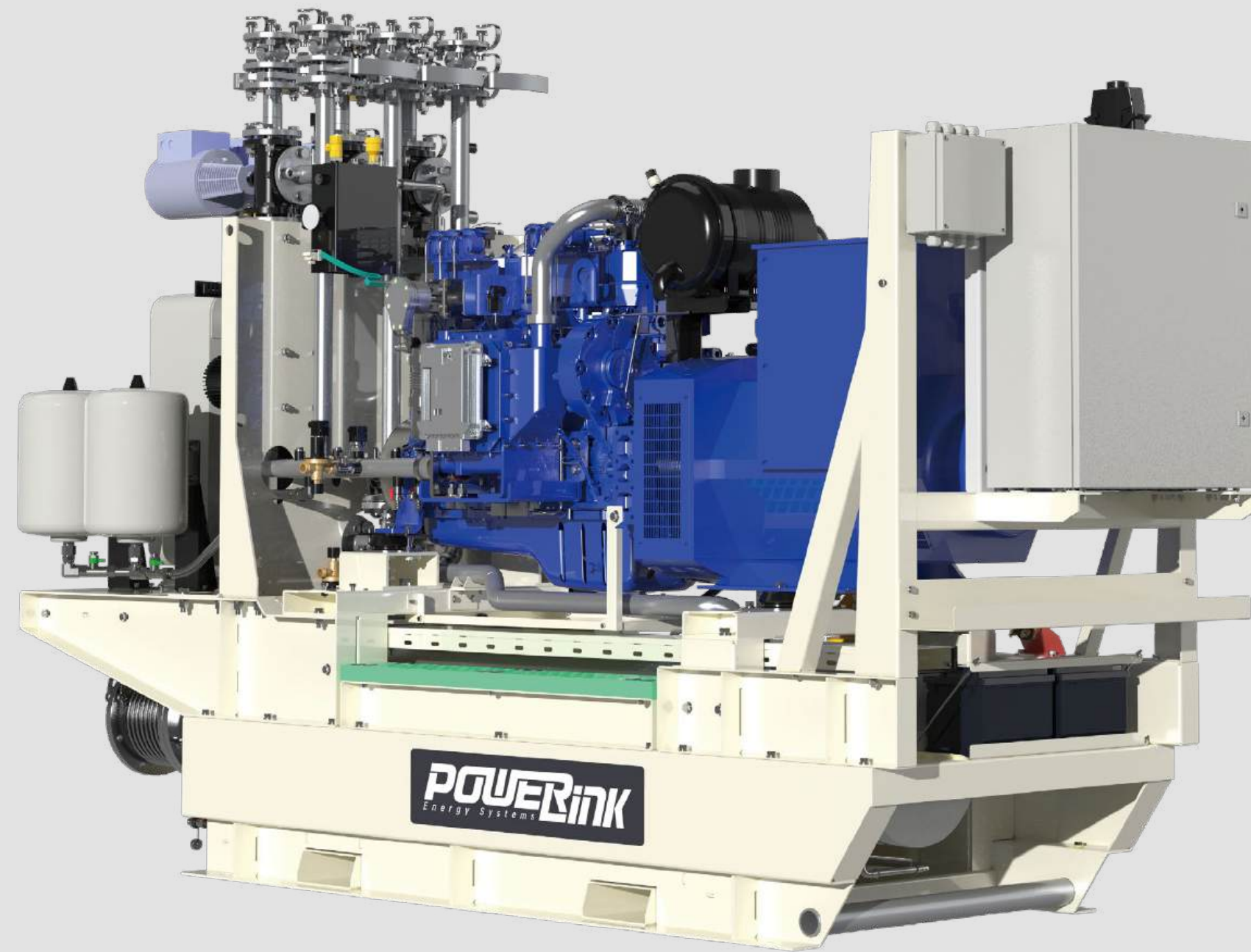
- Ambient temperature adaptability: $-25^{\circ}\text{C} \sim 50^{\circ}\text{C}$
- Container structure: Standard or non-standard design, corrosion resistant, sturdy structure
- Optional operating mode: Island operation, parallel operation and grid connected operation
- Flexible grid-connection technology
- Automated monitoring technology
- Modular structure design
- System lifecycle management
- Romte radiator: Emergency radiator, intercooler radiator, meet 50°C ambient temperature
- Optional SCR after treatment system to meet high-level emission standards



PRODUCT VIEW — GX SERIES, OPEN TYPE

- Power Range: 50-350kW_e

POWERink
Energy Systems



* Genset rated power: 100kW_e/133kW_t, Dimensions(LxWxH): 3826x1166x2189mm, Net weight: 3911kg

PRODUCT VIEW — GX SERIES, OPEN TYPE



- Power Range: 50-350kW_e

ECU control cabinet

- Independent cabinet, plug and play

Gas engine

- Ignition, air-fuel ratio, speed regulation, detonation control

Heat exchange system

- Jacket coolant circulation pipeline
- Intercooler coolant circulation pipeline
- Hot and cool water circulation pipeline

Gas connection

- Gas train, safety control, automatic pressure regulation

Oil tank

- Auxiliary oil tank, configure liquid level sensor

Automatic refueling system

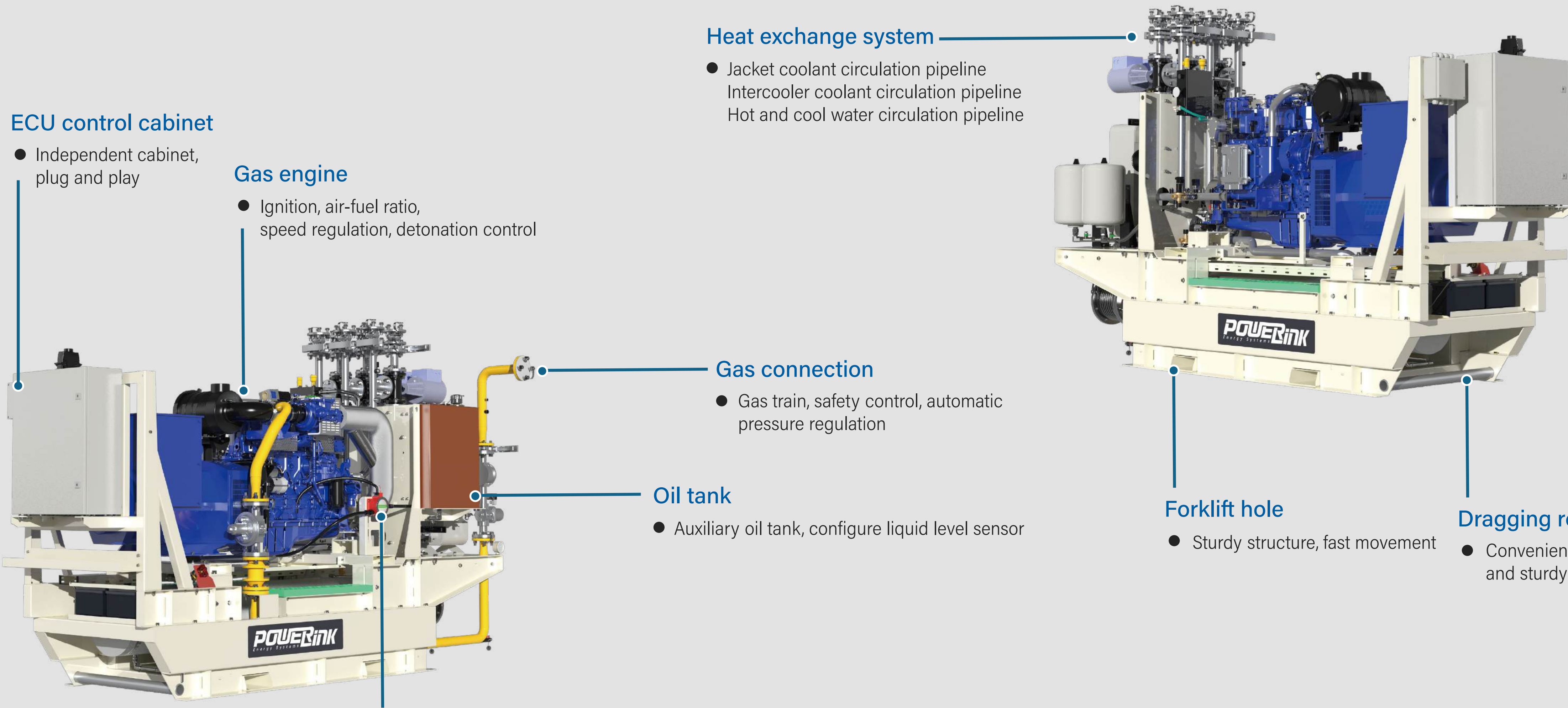
- Oil level controller
- long continuous running time

Forklift hole

- Sturdy structure, fast movement

Dragging rod

- Convenient on-site mobility and sturdy structure



PRODUCT FEATURES — GX SERIES, OPEN TYPE

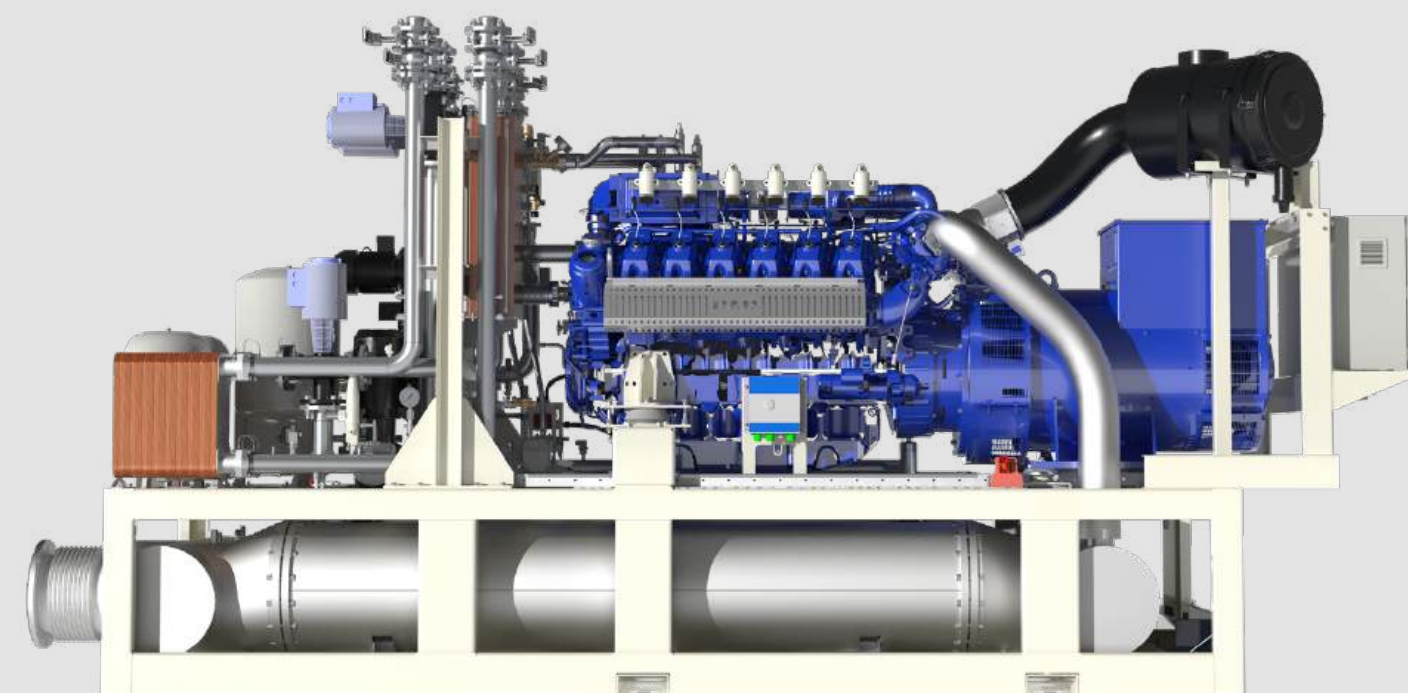
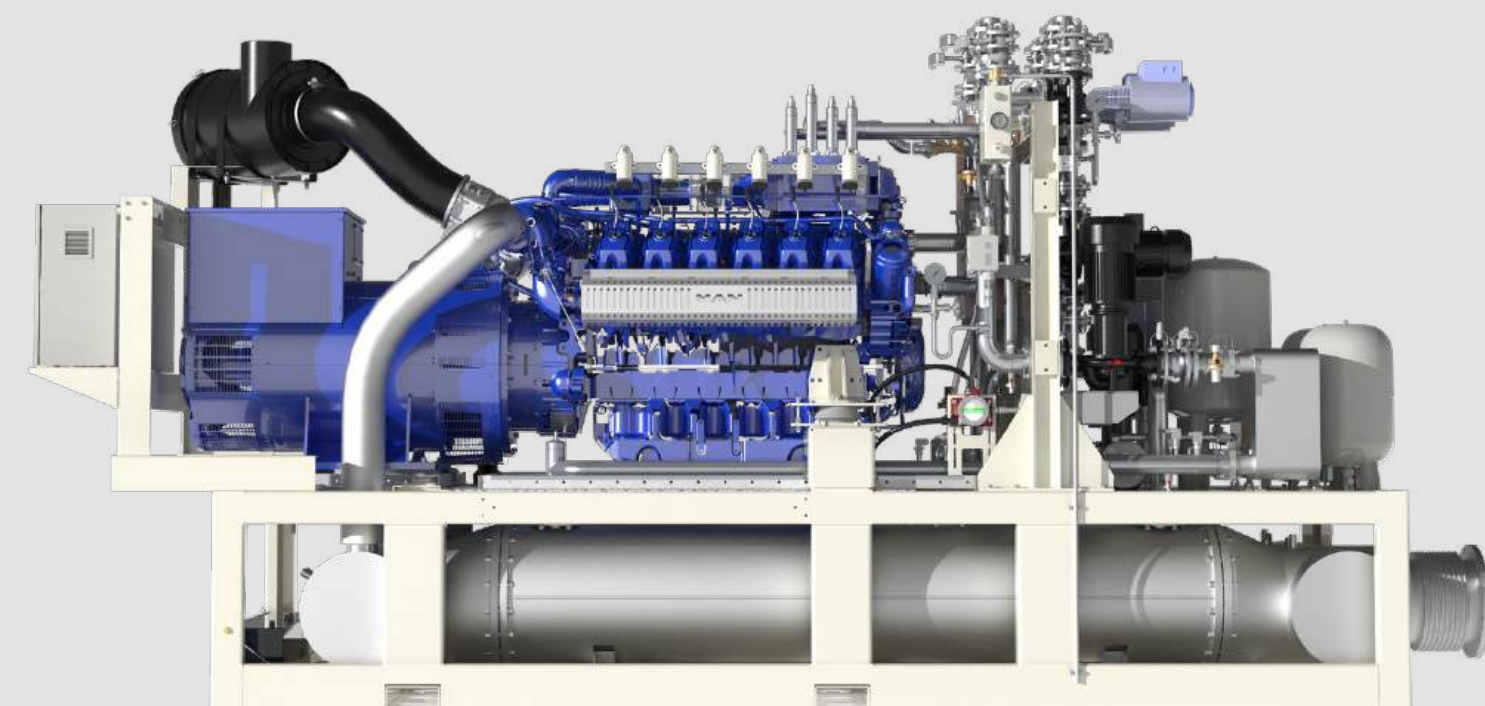
- Power Range: 50-350kW

- Ambient temperature adaptability: $-25^{\circ}\text{C} \sim 50^{\circ}\text{C}$
- Open structure: Installed indoors, plug and play
- Optional operating mode: Island operation, parallel operation and grid connected operation
- Flexible grid-connection technology
- System lifecycle management
- Modular structure design
- Automatic refueling system: Oil level controller, long continuous running time
- Remote radiator: Emergency radiator, intercooler radiator, meet 50°C ambient temperature
- Optional SCR after treatment system to meet high-level emission standards



PRODUCT VIEW — CG SERIES, OPEN TYPE

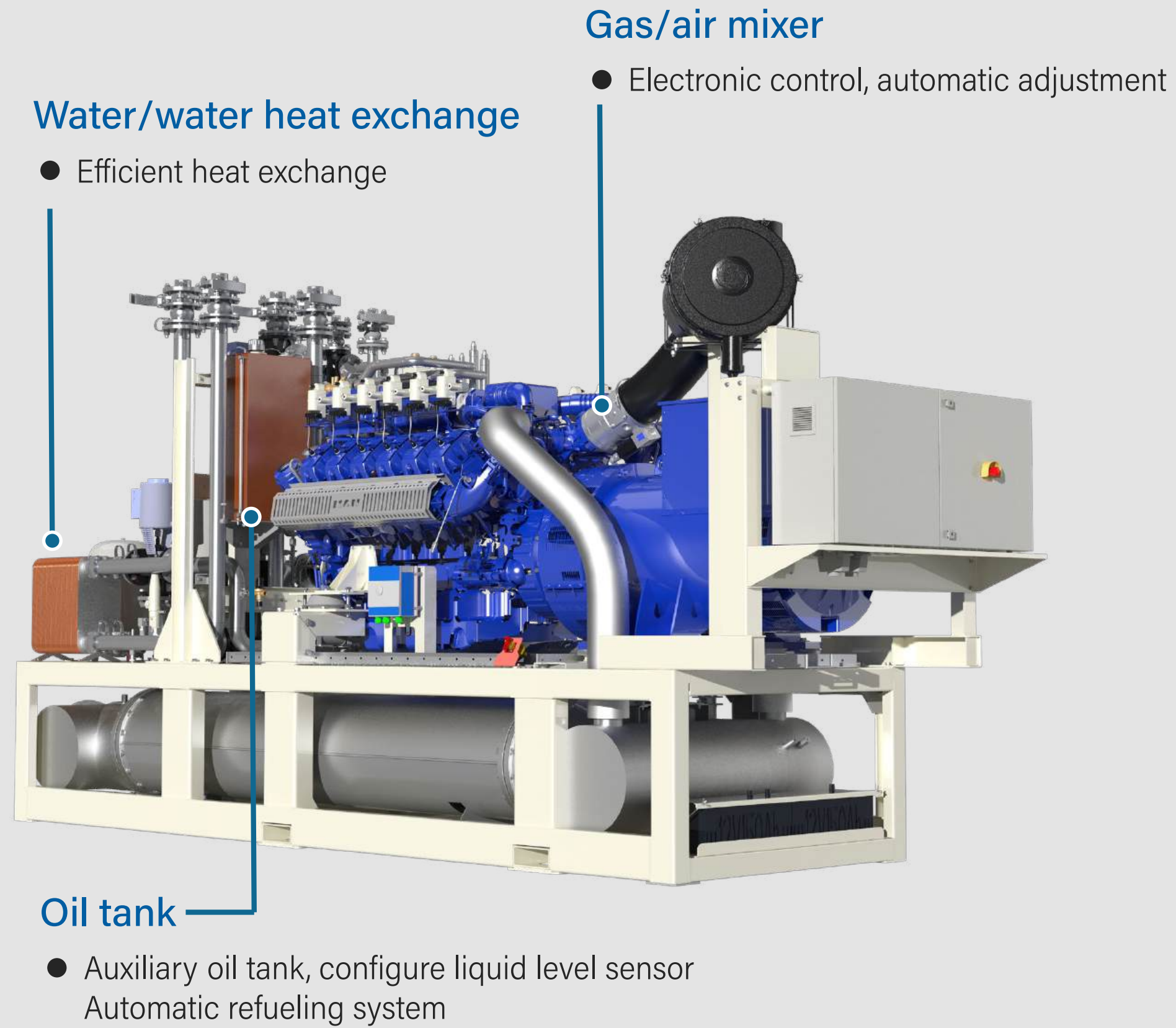
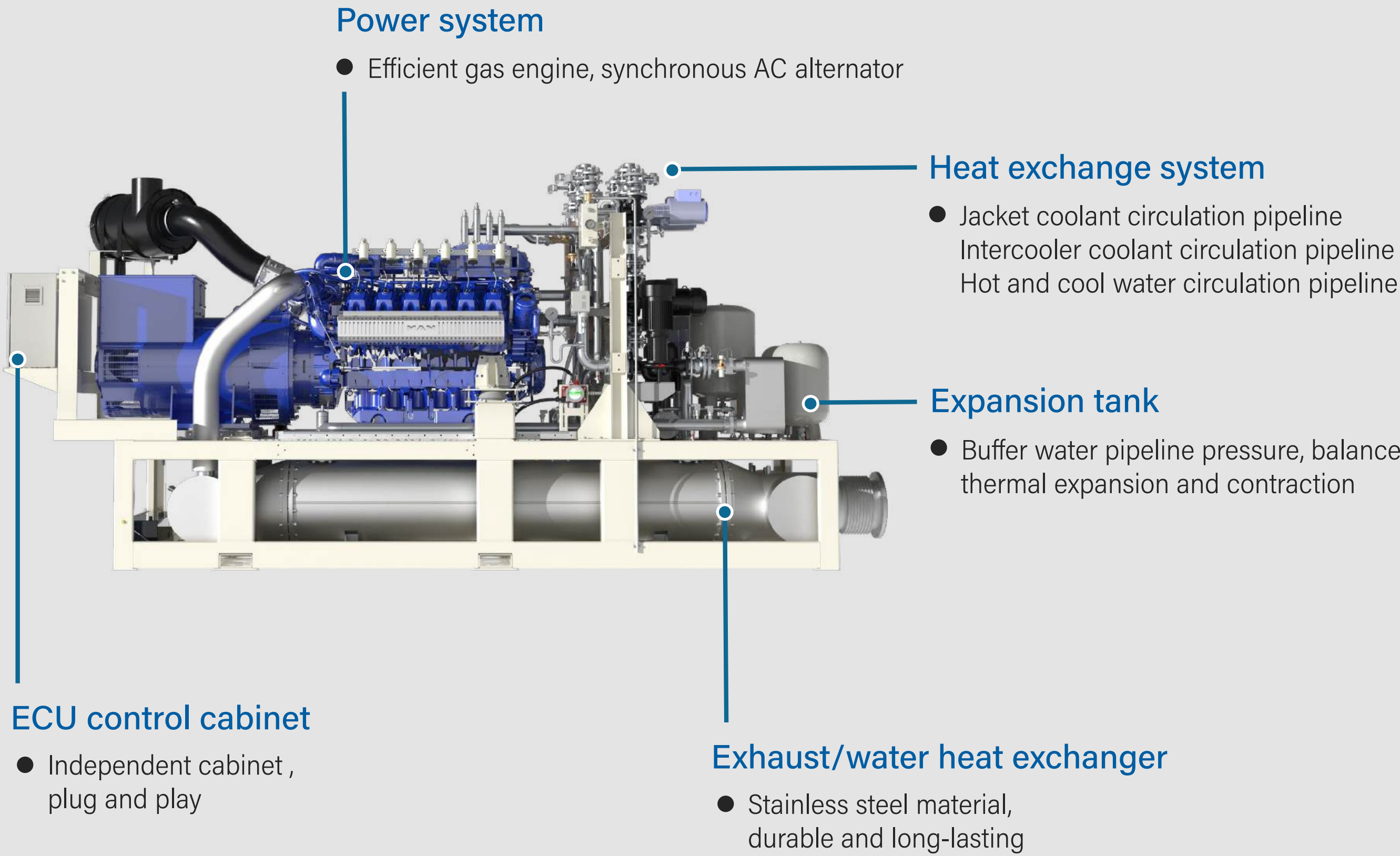
- Power Range: 50-1000kWe



* Genset rated power: 560kWe/685kWt, Dimensions(LxWxH): 4600x1989x2825mm, Net weight: 7807kg

PRODUCT VIEW — CG SERIES, OPEN TYPE

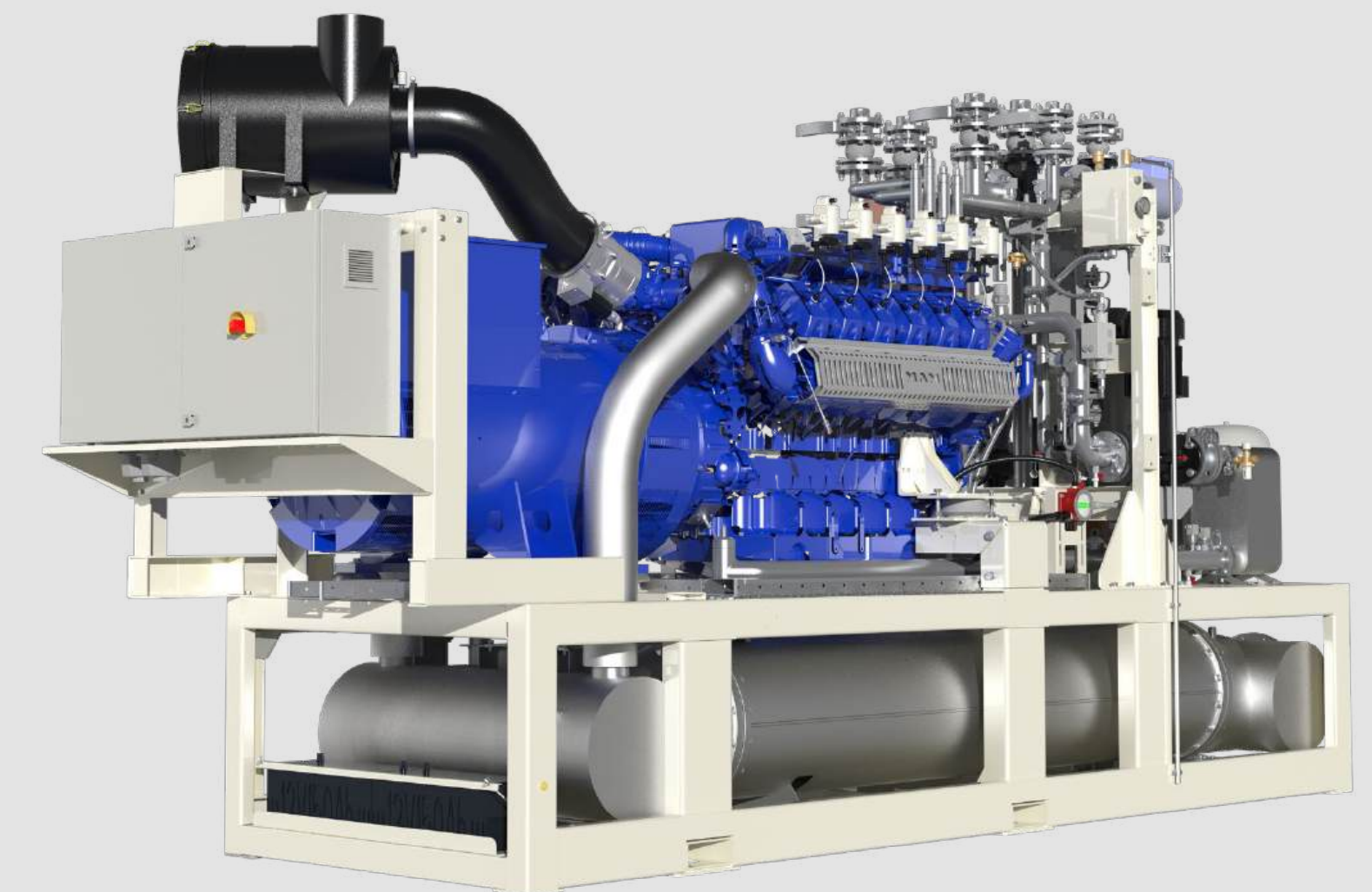
- Power Range: 50-1000kWe



PRODUCT FEATURES — CG SERIES, OPEN TYPE

- Power Range: 50-1000kW

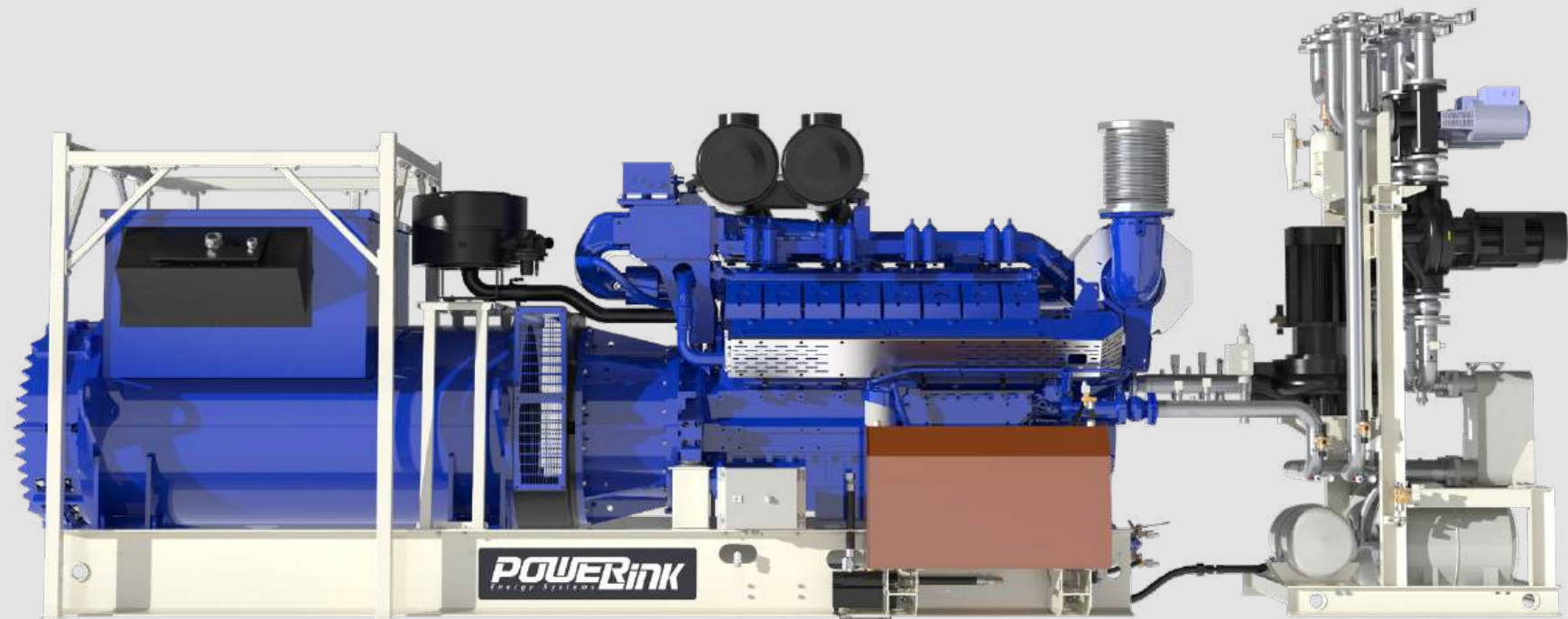
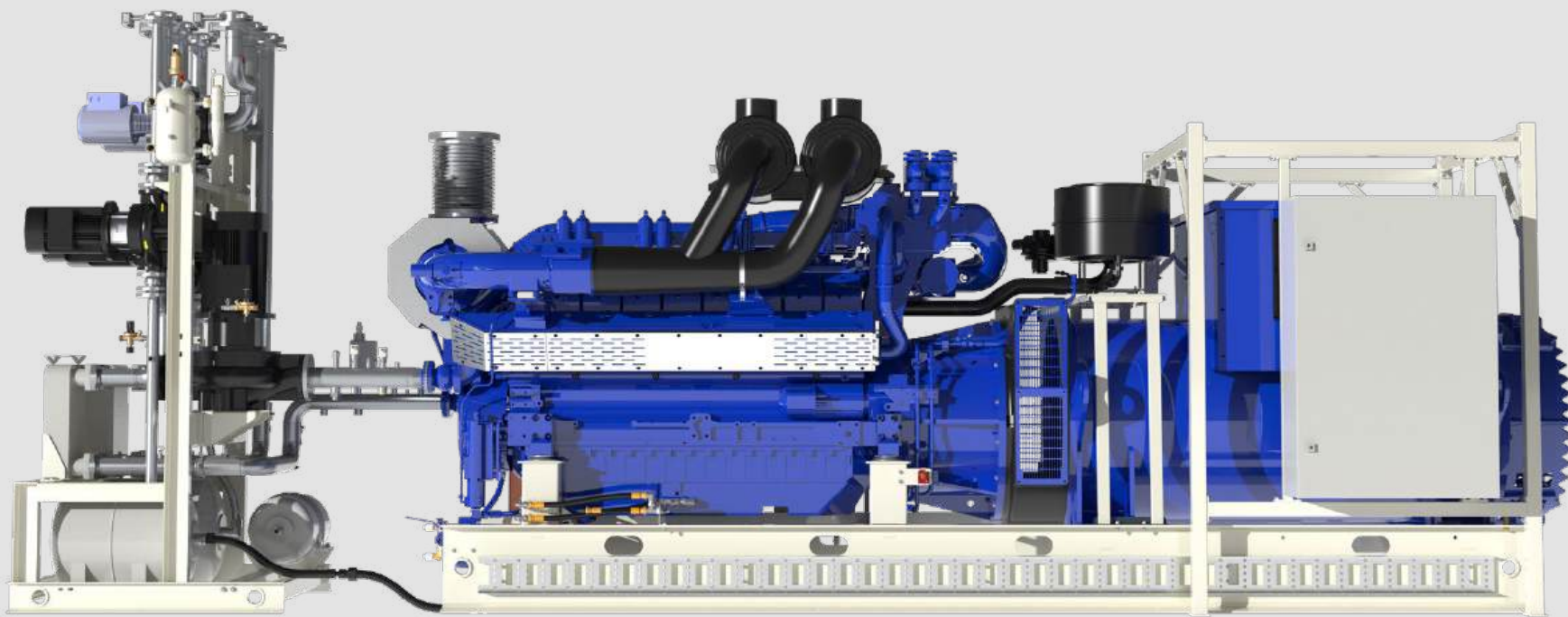
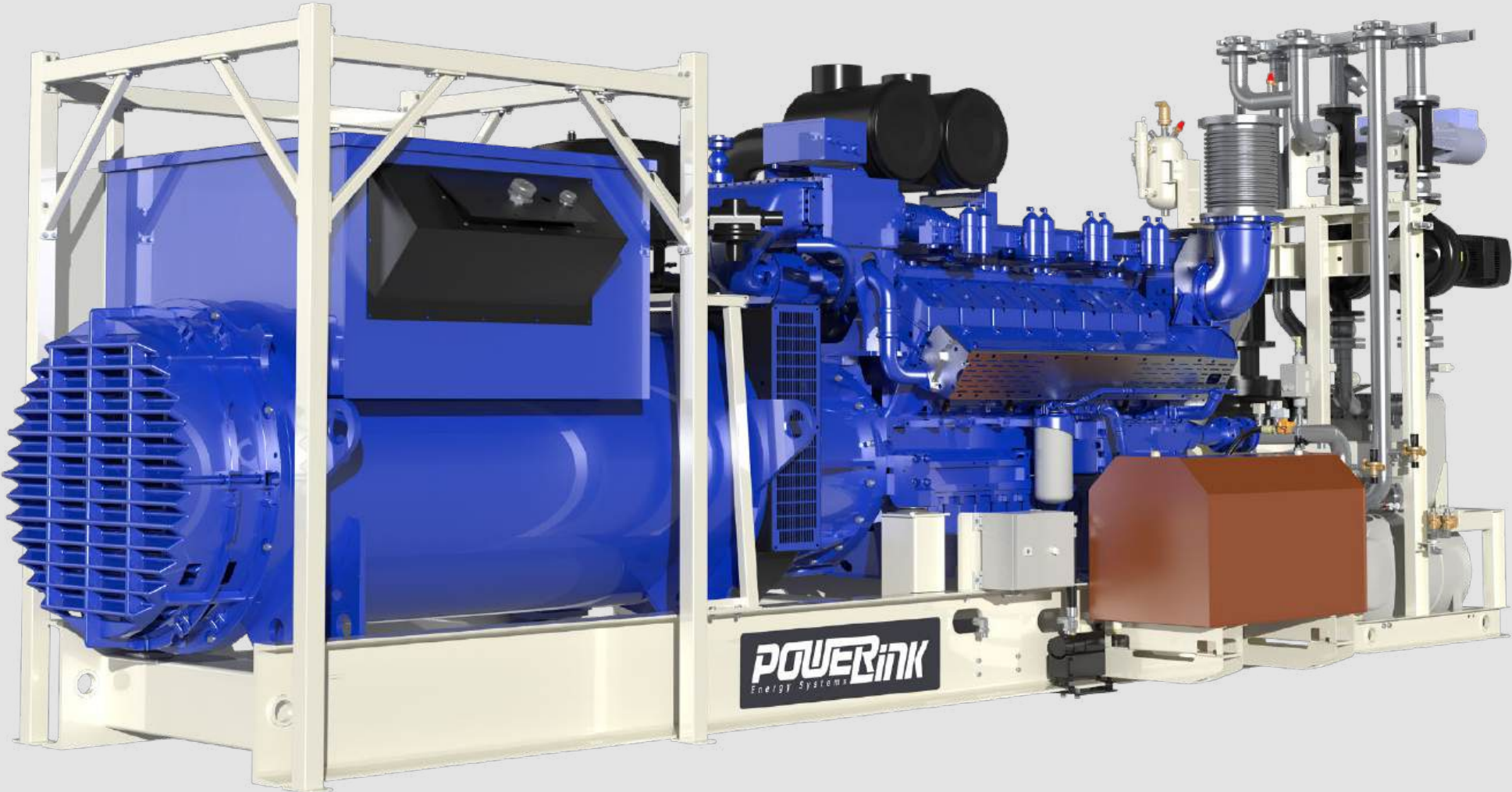
- Ambient temperature adaptability: $-25^{\circ}\text{C} \sim 50^{\circ}\text{C}$
- Open structure: Installed indoors, plug and play
- Optional operating mode: Island operation, parallel operation and grid connected operation
- Flexible grid-connection technology
- System lifecycle management
- Modular structure design
- Quick investment payback period
- Remote radiator: Emergency radiator, intercooler radiator, meet 50°C ambient temperature
- Optional SCR after treatment system to meet high-level emission standards



PRODUCT VIEW — TCG SERIES, OPEN TYPE



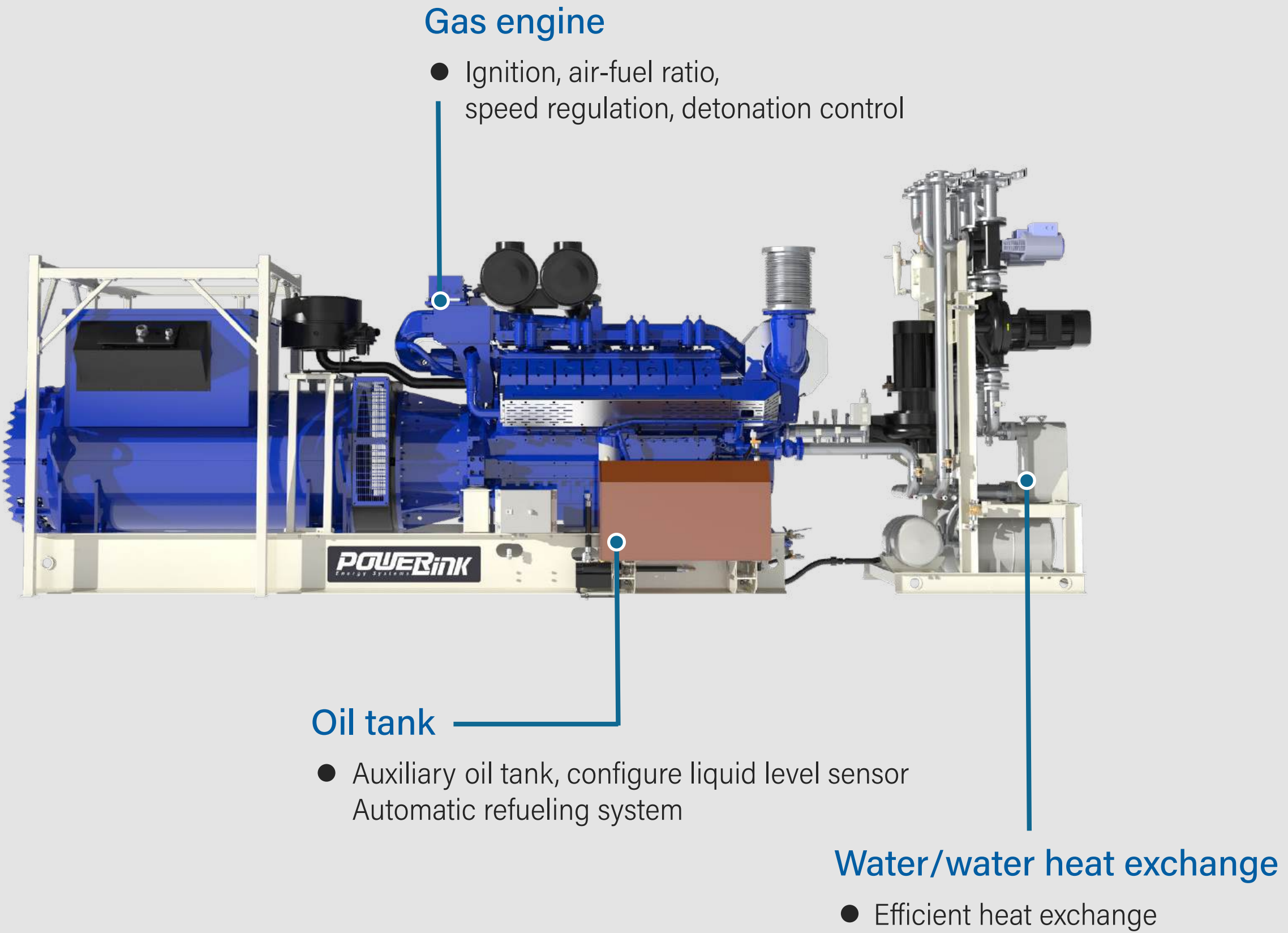
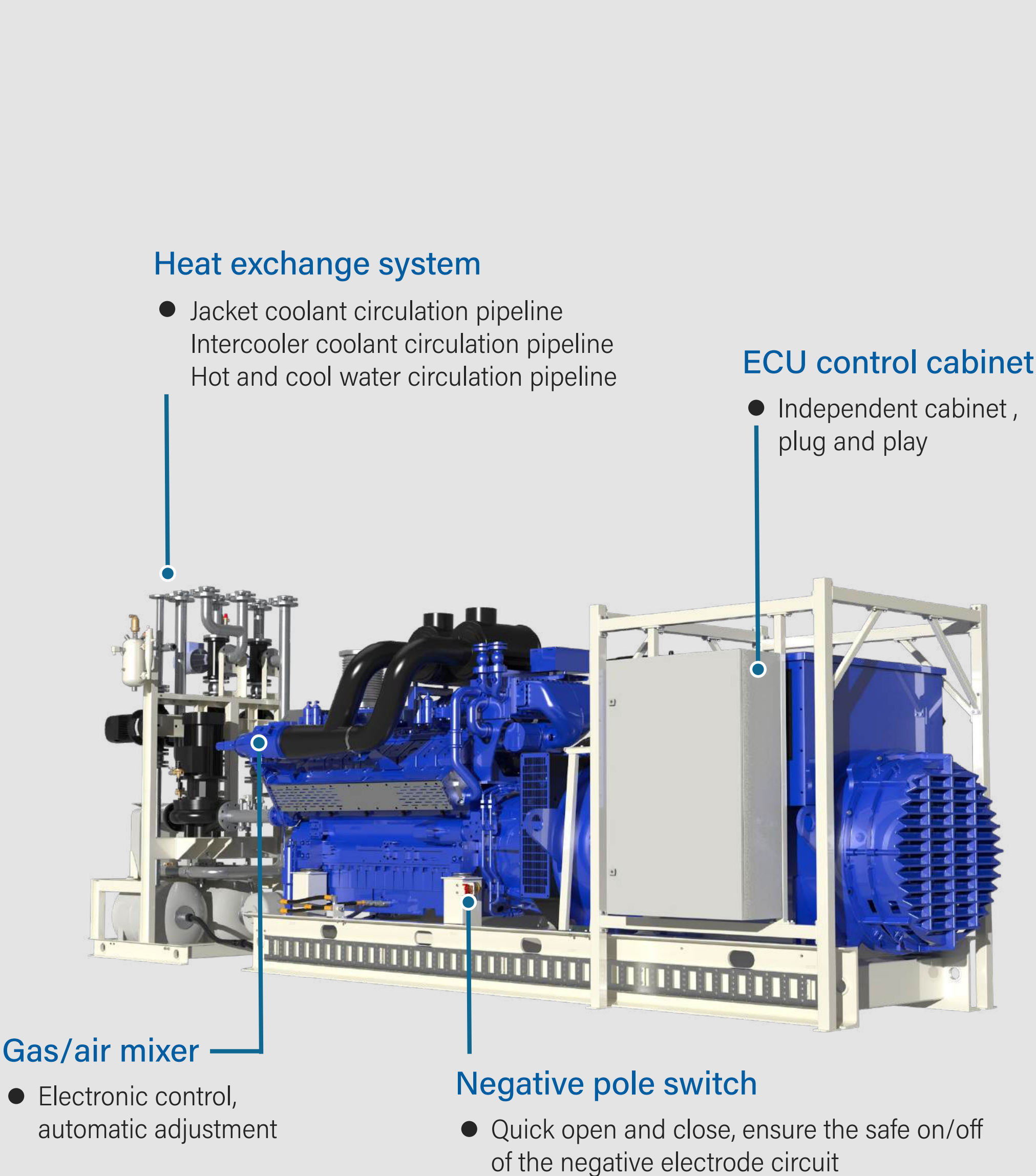
- Power Range: 600-2300kWe



* Genset rated power: 800kWe/855kWt, Dimensions(LxWxH): 6600x2097x2424mm, Net weight: 12626kg

PRODUCT VIEW — TCG SERIES, OPEN TYPE

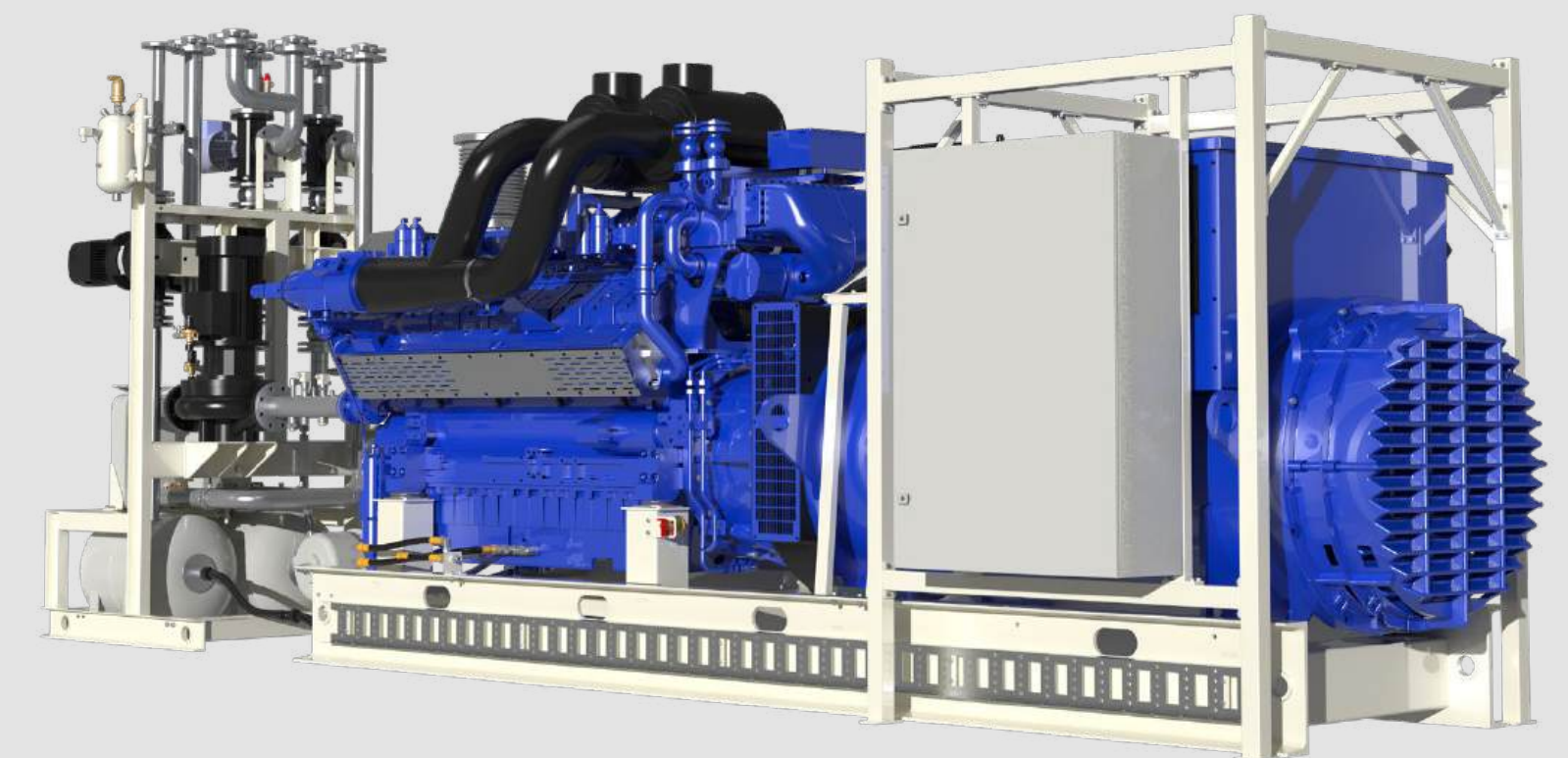
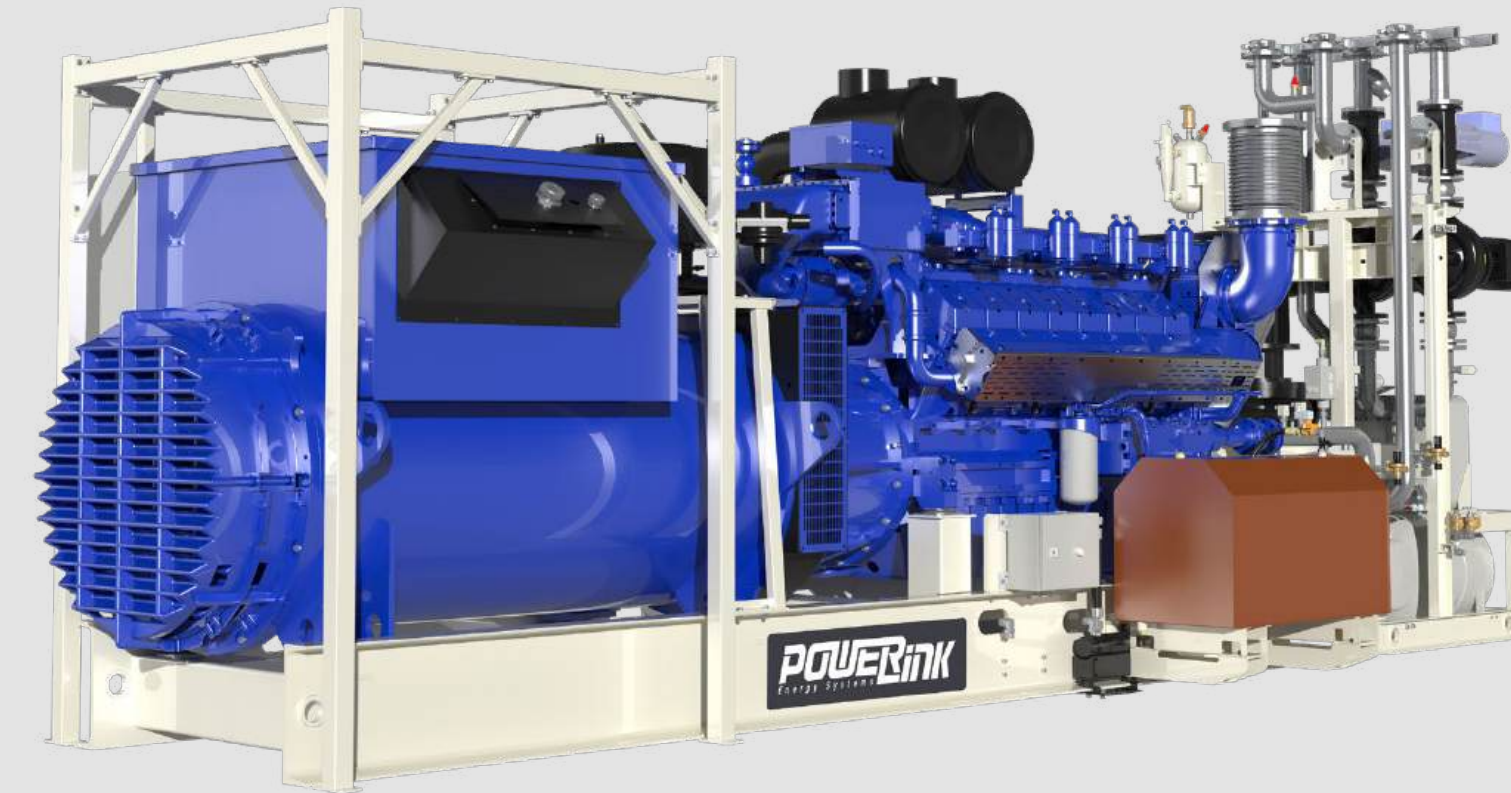
- Power Range: 600-2300kW



PRODUCT FEATURES — TCG SERIES, OPEN TYPE

- Power Range: 600-2300kW

- Ambient temperature adaptability: $-25^{\circ}\text{C} \sim 50^{\circ}\text{C}$
- Open structure: Installed indoors, plug and play
- Optional operating mode: Island operation, parallel operation and grid connected operation
- Flexible grid-connection technology
- Quick investment payback period
- Modular structure design
- System lifecycle management
- Remote radiator: Emergency radiator, intercooler radiator, meet 50°C ambient temperature
- Optional SCR after treatment system to meet high-level emission standards



OPTIONAL—BIOGAS ENERGY PRODUCTS

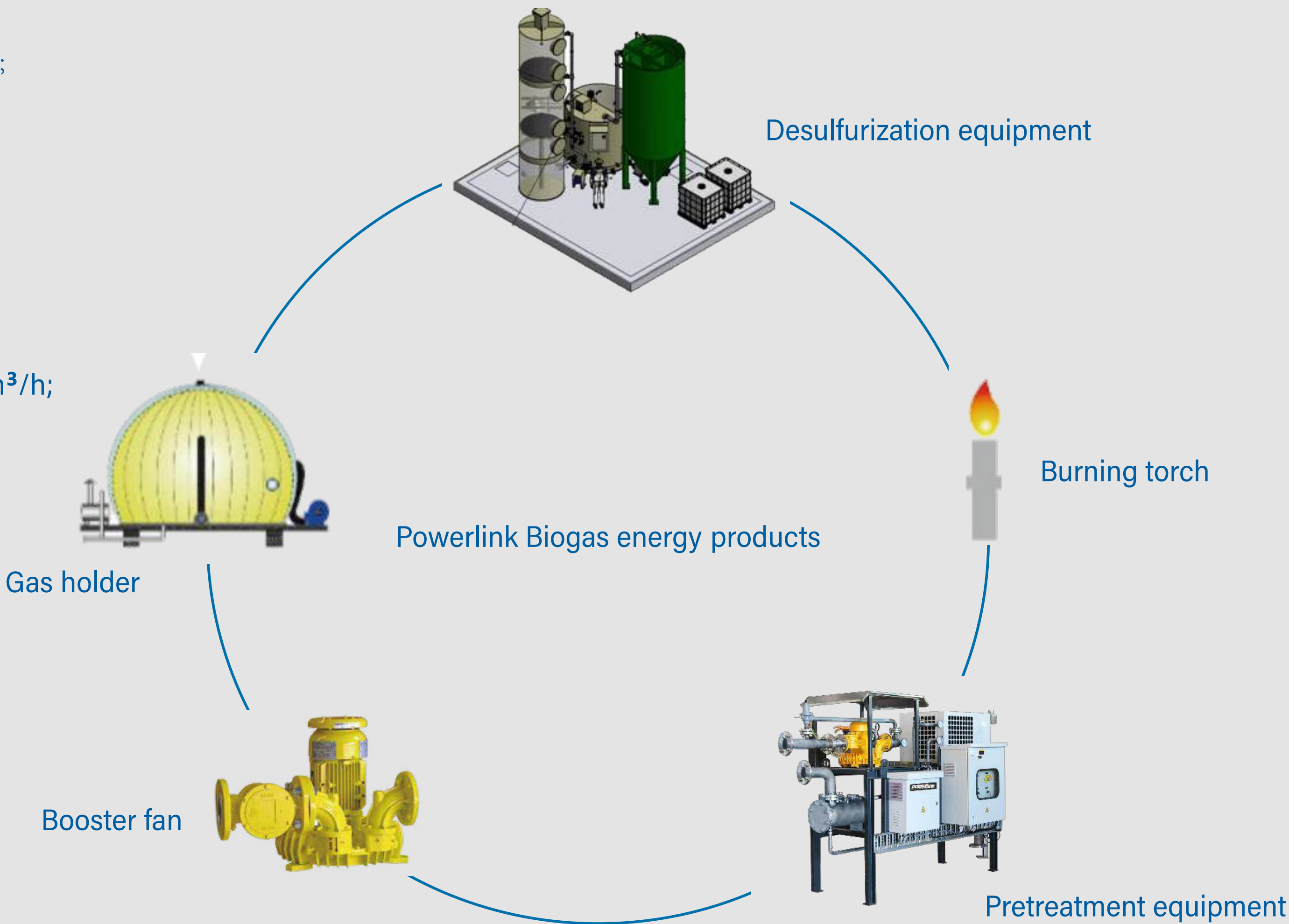
- **Desulfurization equipment:**
Biogas treatment capacity 100-2000m³/h;
H₂S processing precision 50ppm.

- **Pretreatment equipment:**
Biogas treatment capacity 30-2000m³/h;
Cold drying and pressurization.

- **Burning torch:**
Combustion volume of biogas 100-4000m³/h;
Internal combustion structure.

- **Gas holder:**
Amount of storage 100-2000m³/h;
Double membrane structure.

- **Booster fan:**
Power range 2-40kW;
Frequency 50/60Hz.



CUSTOMIZED DESIGN

Customization Products

- **Voltage grade:** Low-voltage unit, medium-voltage unit.
- **Structural Customization:** Container integrated twin power or mulit power.
- **High Level Requirements:** Low emission standard, super silent, etc.
- **Harsh Environment:** Super cold areas, super heat areas, high-altitude areas, etc.

Customization Solutions

- **Installed Capacity:** Parallel or grid-connected forms samall and medium-sized distributed energy station
- **Transmission And Distribution System:** Low-voltage complete set, medium-voltage complete set, transformer system, etc.
- **EPC Project:** Design, procurement and construction integration

Structural Customization—TWIN POWER



1# Power pack

2# Power pack



DISTRIBUTED ENERGY SOLUTION



✓ Environmental

✓ Efficiency

✓ Value

Application Fields:

- Business Centure
- Urban Buildings
- Airport
- Hotel
- Industry
- Agriculture
- Animal Husbandry
- Sewage Treatment Plan

